

Roadway

Date: 10.11.2021
Operator:



Operator
Telephone
Fax
e-Mail

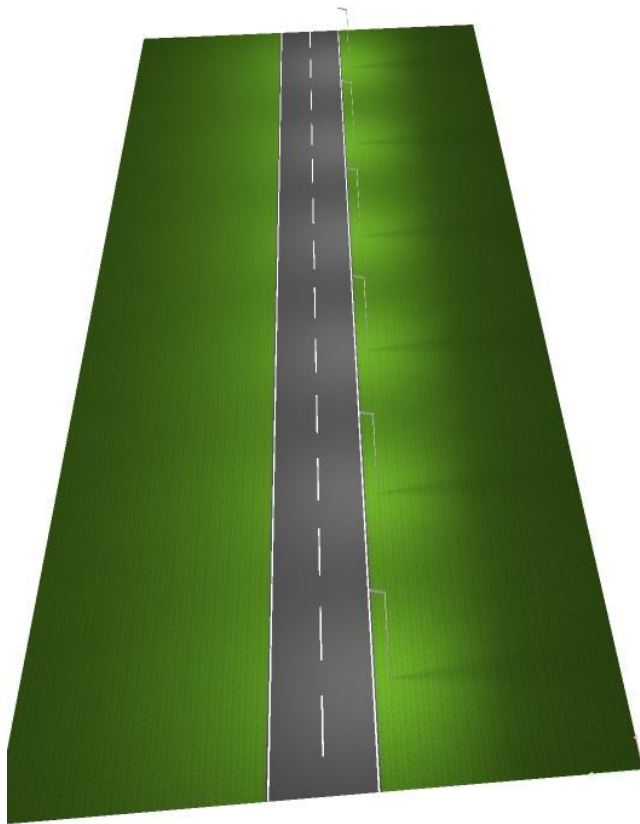
Table of contents

Roadway	
Project Cover	1
Table of contents	2
Roadway	
3D Rendering	3
False Color Rendering	4
Street 1	
Planning data	5
Luminaire parts list	6
Photometric Results	7
Valuation Fields	
Valuation Field Roadway 1	
Results overview	8
Isolines (E)	9
Greyscale (E)	10
Value Chart (E)	11



Operator
Telephone
Fax
e-Mail

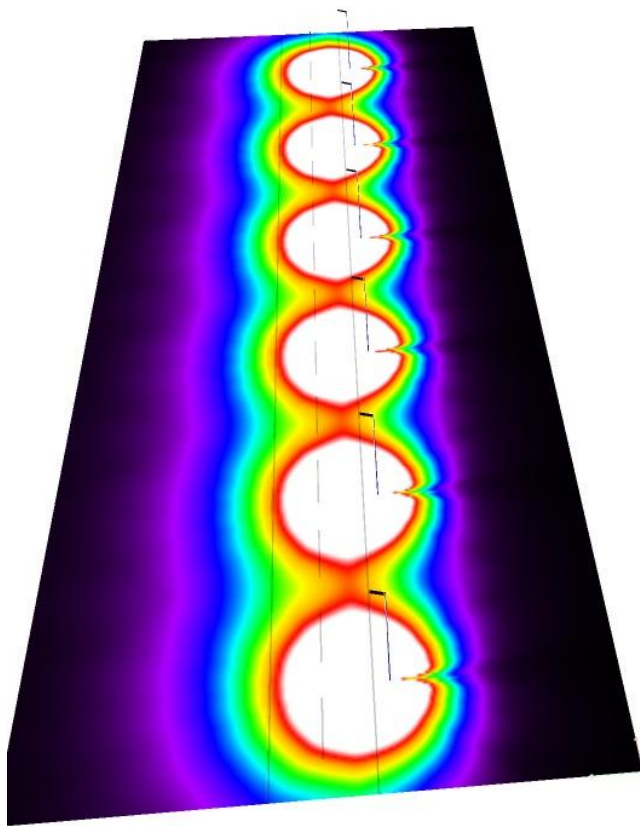
Roadway / 3D Rendering





Operator
Telephone
Fax
e-Mail

Roadway / False Color Rendering



0 3.13 6.25 9.38 12.50 15.63 18.75 21.88 25 lx



Operator
Telephone
Fax
e-Mail

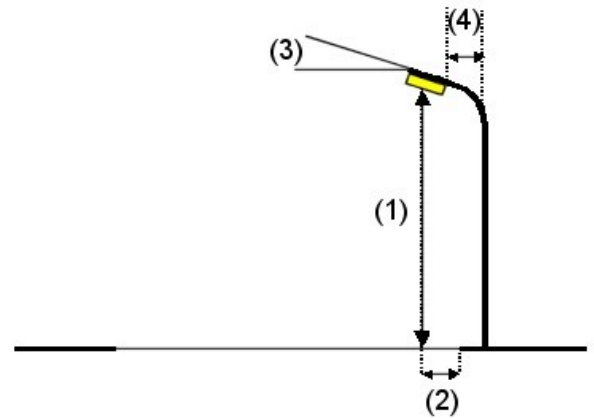
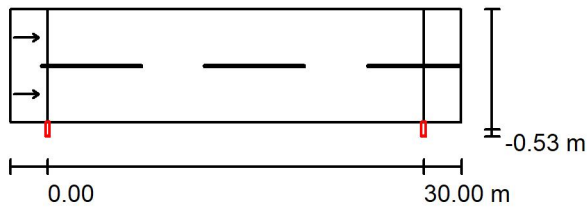
Street 1 / Planning data

Street Profile

Roadway 1 (Width: 9.000 m, Number of lanes: 2, tarmac: R3, q0: 0.070)

Light loss factor: 0.80

Luminaire Arrangements



Luminaire:	Aern Industry Group Limited AN-SLZ-120W All-in-one solar street light	
Luminous flux (Luminaire):	19152 lm	Maximum luminous intensities
Luminous flux (Lamps):	19156 lm	at 70°: 331 cd/klm
Luminaire Wattage:	0.0 W	at 80°: 68 cd/klm
Arrangement:	Single row, bottom	at 90°: 9.94 cd/klm
Pole Distance:	30.000 m	Any direction forming the specified angle from the downward vertical, with the luminaire installed for use.
Mounting Height (1):	9.000 m	Arrangement complies with luminous intensity class G3.
Height:	8.903 m	Arrangement complies with glare index class D.5.
Overhang (2):	-0.500 m	
Boom Angle (3):	15.0 °	
Boom Length (4):	0.000 m	

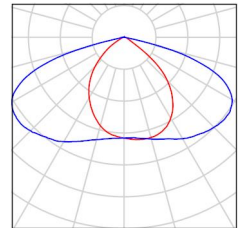


Operator
Telephone
Fax
e-Mail

Street 1 / Luminaire parts list

Anern Industry Group Limited AN-SLZ-120W All-in-one solar street light
Article No.: AN-SLZ-120W
Luminous flux (Luminaire): 19152 lm
Luminous flux (Lamps): 19156 lm
Luminaire Wattage: 0.0 W
Luminaire classification according to CIE: 100
CIE flux code: 48 84 98 100 100
Fitting: 1 x User defined (Correction Factor 1.000).

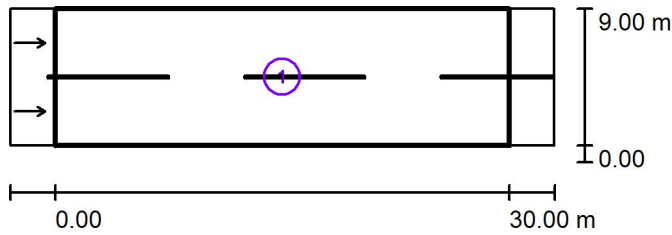
See our luminaire catalog for an image of the luminaire.





Operator
Telephone
Fax
e-Mail

Street 1 / Photometric Results



Light loss factor: 0.80

Scale 1:500

Calculation Field List

- 1 Valuation Field Roadway 1
Length: 30.000 m, Width: 9.000 m
Grid: 10 x 6 Points
Accompanying Street Elements: Roadway 1.
tarmac: R3, q0: 0.070
Selected Lighting Class: ME2

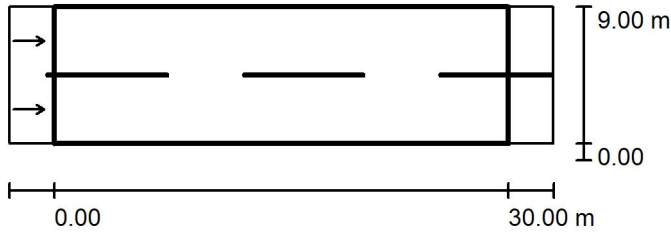
(All lighting performance requirements are met.)

	L_{av} [cd/m ²]	U0	UI	TI [%]	SR
Calculated values:	1.60	0.42	0.85	9	0.64
Required values according to class:	≥ 1.50	≥ 0.40	≥ 0.70	≤ 10	≥ 0.50
Fulfilled/Not fulfilled:	✓	✓	✓	✓	✓



Operator
Telephone
Fax
e-Mail

Street 1 / Valuation Field Roadway 1 / Results overview



Light loss factor: 0.80

Scale 1:500

Grid: 10 x 6 Points

Accompanying Street Elements: Roadway 1.

tarmac: R3, q0: 0.070

Selected Lighting Class: ME2

(All lighting performance requirements are met.)

	L_{av} [cd/m ²]	U0	UI	TI [%]	SR
Calculated values:	1.60	0.42	0.85	9	0.64
Required values according to class:	≥ 1.50	≥ 0.40	≥ 0.70	≤ 10	≥ 0.50
Fulfilled/Not fulfilled:	✓	✓	✓	✓	✓

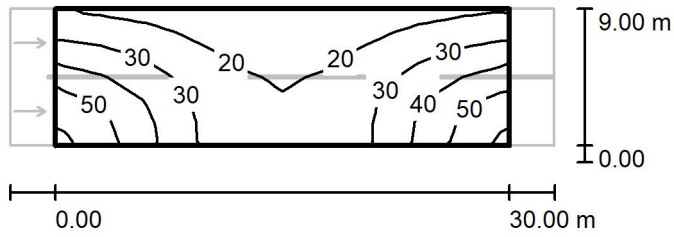
Assigned observer (2 Pieces):

No.	Observer	Position [m]	L_{av} [cd/m ²]	U0	UI	TI [%]
1	Observer 1	(-60.000, 2.250, 1.500)	1.60	0.45	0.85	9
2	Observer 2	(-60.000, 6.750, 1.500)	1.76	0.42	0.90	4



Operator
Telephone
Fax
e-Mail

Street 1 / Valuation Field Roadway 1 / Isolines (E)



Values in Lux, Scale 1 : 500

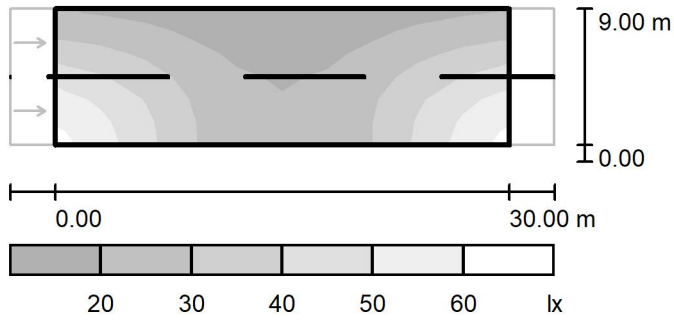
Grid: 10 x 6 Points

E_{av} [lx]	E_{min} [lx]	E_{max} [lx]	u0	E_{min} / E_{max}
29	13	58	0.460	0.232



Operator
Telephone
Fax
e-Mail

Street 1 / Valuation Field Roadway 1 / Greyscale (E)



Scale 1 : 500

Grid: 10 x 6 Points

E_{av} [lx]
29

E_{min} [lx]
13

E_{max} [lx]
58

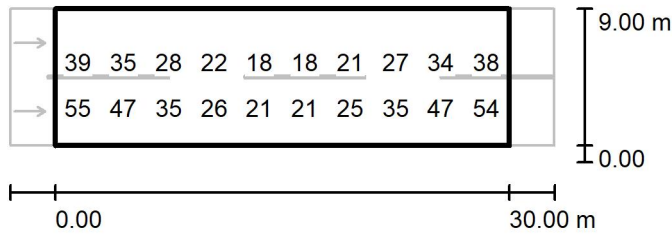
u_0
0.460

E_{min} / E_{max}
0.232



Operator
 Telephone
 Fax
 e-Mail

Street 1 / Valuation Field Roadway 1 / Value Chart (E)



Values in Lux, Scale 1 : 500

Not all calculated values could be displayed.

Grid: 10 x 6 Points

E_{av} [lx]	E_{min} [lx]	E_{max} [lx]	u0	E_{min} / E_{max}
29	13	58	0.460	0.232