

Project-0306

Partner for Contact:
Order No.:
Company:
Customer No.:

Date: 06.03.2024
Operator:

Operator
Telephone
Fax
e-Mail

Table of contents

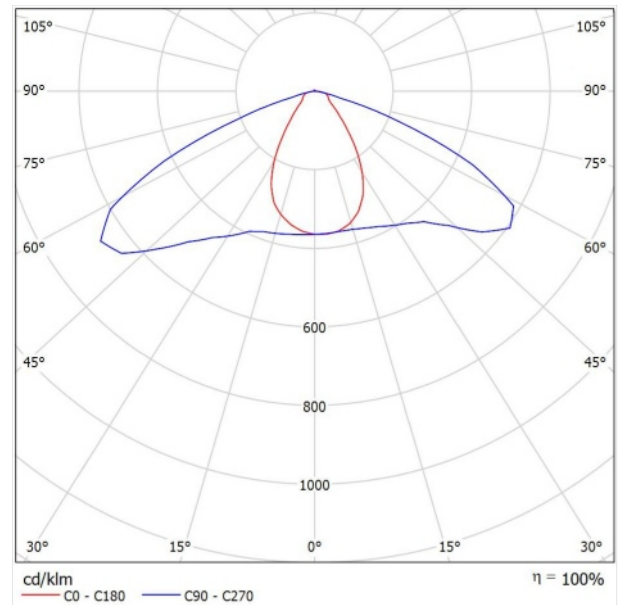
Project-0306	
Project Cover	1
Table of contents	2
LED 100W Solar Light	
Luminaire Data Sheet	3
Street 1	
Planning data	4
Luminaire parts list	5
Photometric Results	6
3D Rendering	8
False Color Rendering	9
Valuation Fields	
Valuation Field Roadway 1	
Results overview	10
Isolines (E)	11
Greyscale (E)	12
Value Chart (E)	13
Table (E)	14
Observer	
Observer 1	
Isolines (L)	15
Valuation Field Roadway 2	
Observer	
Observer 3	
Isolines (L)	16

Operator
Telephone
Fax
e-Mail

LED 100W Solar Light / Luminaire Data Sheet

See our luminaire catalog for an image of the luminaire.

Luminous emittance 1:



Luminaire classification according to CIE: 100
CIE flux code: 50 84 98 100 100

Due to missing symmetry properties, no UGR table can be displayed for this luminaire.

Operator
Telephone
Fax
e-Mail

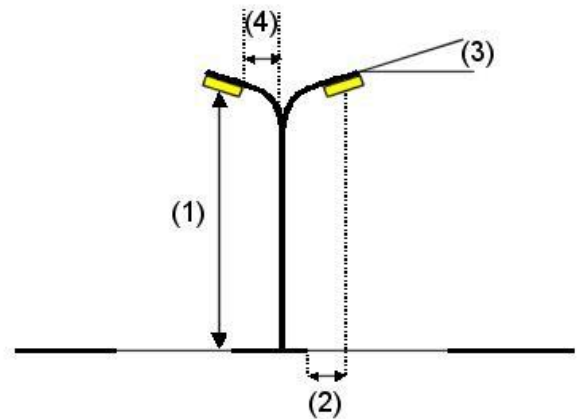
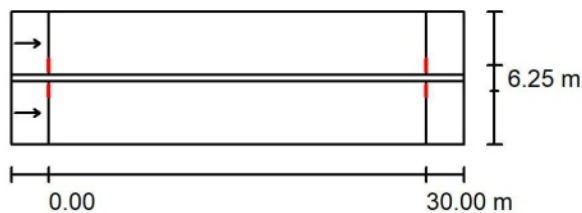
Street 1 / Planning data

Street Profile

Roadway 2	(Width: 5.000 m, Number of lanes: 1, tarmac: R3, q0: 0.070)
Median 1	(Width: 0.500 m, Height: 0.200 m)
Roadway 1	(Width: 5.000 m, Number of lanes: 1, tarmac: R3, q0: 0.070)

Light loss factor: 0.80

Luminaire Arrangements



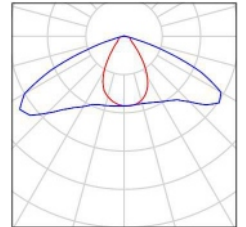
Luminaire:	LED 100W Solar Light	
Luminous flux (Luminaire):	17070 lm	Maximum luminous intensities
Luminous flux (Lamps):	17070 lm	at 70°: 335 cd/klm
Luminaire Wattage:	100.0 W	at 80°: 43 cd/klm
Arrangement:	on Median	at 90°: 31 cd/klm
Pole Distance:	30.000 m	Any direction forming the specified angle from the downward vertical, with the luminaire installed for use.
Mounting Height (1):	9.000 m	Arrangement complies with luminous intensity class G1.
Height:	9.000 m	Arrangement complies with glare index class D.2.
Overhang (2):	0.750 m	
Boom Angle (3):	15.0 °	
Boom Length (4):	1.000 m	

Operator
Telephone
Fax
e-Mail

Street 1 / Luminaire parts list

LED 100W Solar Light
Article No.: 100W
Luminous flux (Luminaire): 17070 lm
Luminous flux (Lamps): 17070 lm
Luminaire Wattage: 100.0 W
Luminaire classification according to CIE: 100
CIE flux code: 50 84 98 100 100
Fitting: 1 x User defined (Correction Factor 1.000).

See our luminaire catalog for an image of the luminaire.



Operator
 Telephone
 Fax
 e-Mail

Street 1 / Photometric Results



Light loss factor: 0.80

Scale 1:258

Calculation Field List

- 1 Valuation Field Roadway 1
 Length: 30.000 m, Width: 5.000 m
 Grid: 10 x 3 Points
 Accompanying Street Elements: Roadway 1.
 tarmac: R3, q0: 0.070
 Selected Lighting Class: ME4b

(All lighting performance requirements are met.)

	L_{av} [cd/m ²]	U0	UI	TI [%]	SR
Calculated values:	3.14	0.54	0.55	4	0.88
Required values according to class:	≥ 0.75	≥ 0.40	≥ 0.50	≤ 15	≥ 0.50
Fulfilled/Not fulfilled:	<input checked="" type="checkbox"/>	<input checked="" type="checkbox"/>	<input checked="" type="checkbox"/>	<input checked="" type="checkbox"/>	<input checked="" type="checkbox"/>

Operator
Telephone
Fax
e-Mail

Street 1 / Photometric Results

Calculation Field List

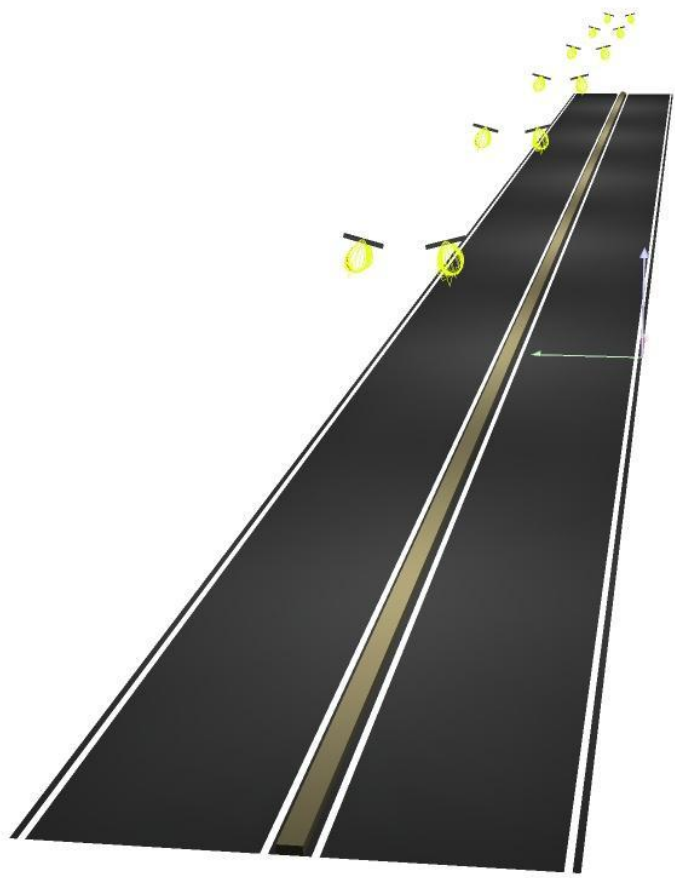
- 2 Valuation Field Roadway 2
 Length: 30.000 m, Width: 5.000 m
 Grid: 10 x 3 Points
 Accompanying Street Elements: Roadway 2.
 tarmac: R3, q0: 0.070
 Selected Lighting Class: ME4b

(All lighting performance requirements are met.)

	L_{av} [cd/m ²]	U0	UI	TI [%]	SR
Calculated values:	3.15	0.56	0.59	5	0.88
Required values according to class:	≥ 0.75	≥ 0.40	≥ 0.50	≤ 15	≥ 0.50
Fulfilled/Not fulfilled:	<input checked="" type="checkbox"/>	<input checked="" type="checkbox"/>	<input checked="" type="checkbox"/>	<input checked="" type="checkbox"/>	<input checked="" type="checkbox"/>

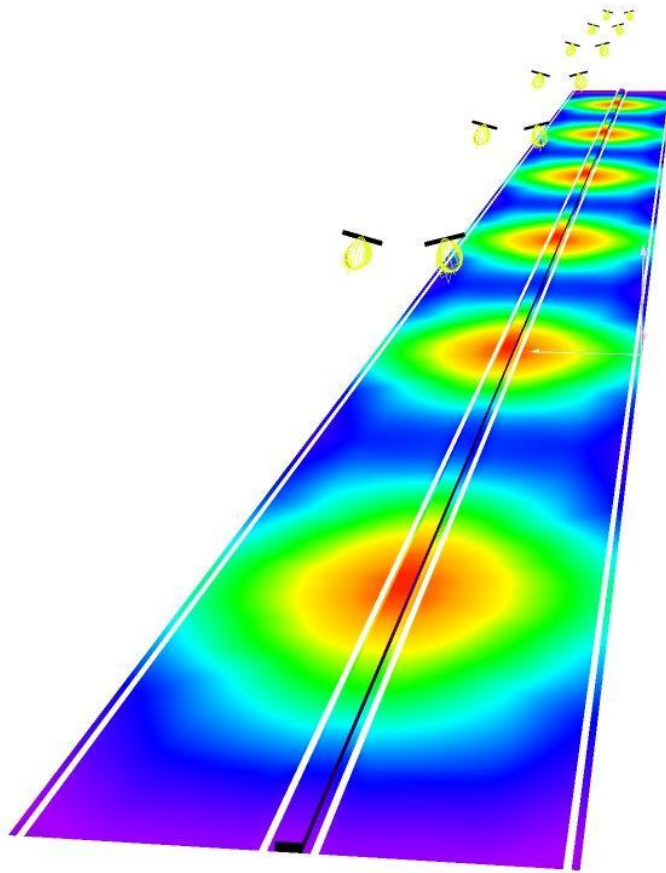
Operator
Telephone
Fax
e-Mail

Street 1 / 3D Rendering



Operator
Telephone
Fax
e-Mail

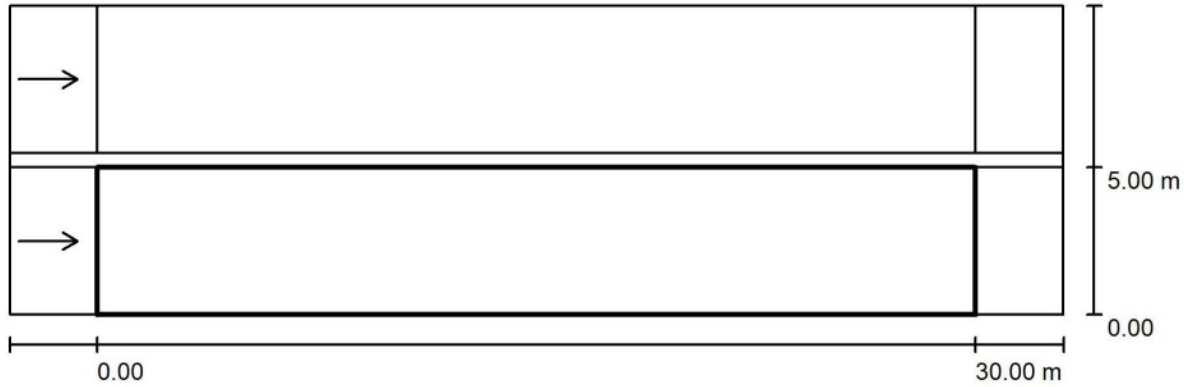
Street 1 / False Color Rendering



0 15 30 45 60 75 90 105 120 lx

Operator
 Telephone
 Fax
 e-Mail

Street 1 / Valuation Field Roadway 1 / Results overview



Light loss factor: 0.80

Scale 1:258

Grid: 10 x 3 Points

Accompanying Street Elements: Roadway 1.

tarmac: R3, q0: 0.070

Selected Lighting Class: ME4b

(All lighting performance requirements are met.)

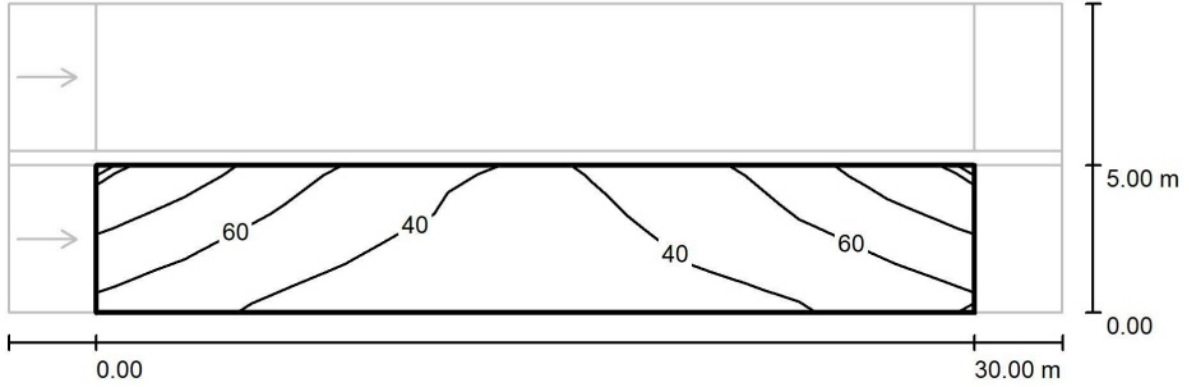
	L_{av} [cd/m ²]	U0	UI	TI [%]	SR
Calculated values:	3.14	0.54	0.55	4	0.88
Required values according to class:	≥ 0.75	≥ 0.40	≥ 0.50	≤ 15	≥ 0.50
Fulfilled/Not fulfilled:	✓	✓	✓	✓	✓

Assigned observer (1 Pieces):

No.	Observer	Position [m]	L_{av} [cd/m ²]	U0	UI	TI [%]
1	Observer 1	(-60.000, 2.500, 1.500)	3.14	0.54	0.55	4

Operator
Telephone
Fax
e-Mail

Street 1 / Valuation Field Roadway 1 / Isolines (E)



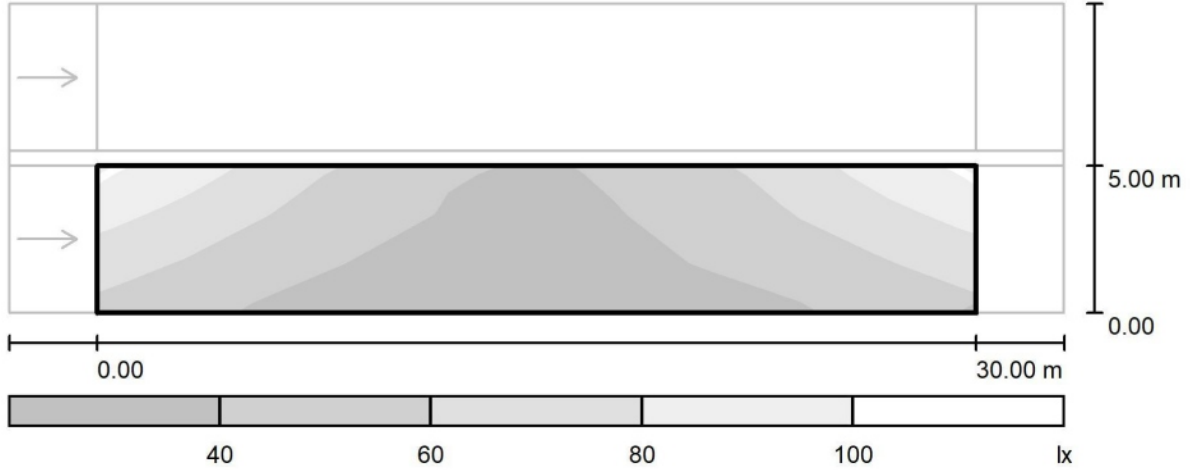
Values in Lux, Scale 1 : 258

Grid: 10 x 3 Points

E_{av} [lx]	E_{min} [lx]	E_{max} [lx]	u0	E_{min} / E_{max}
51	30	90	0.588	0.332

Operator
Telephone
Fax
e-Mail

Street 1 / Valuation Field Roadway 1 / Greyscale (E)



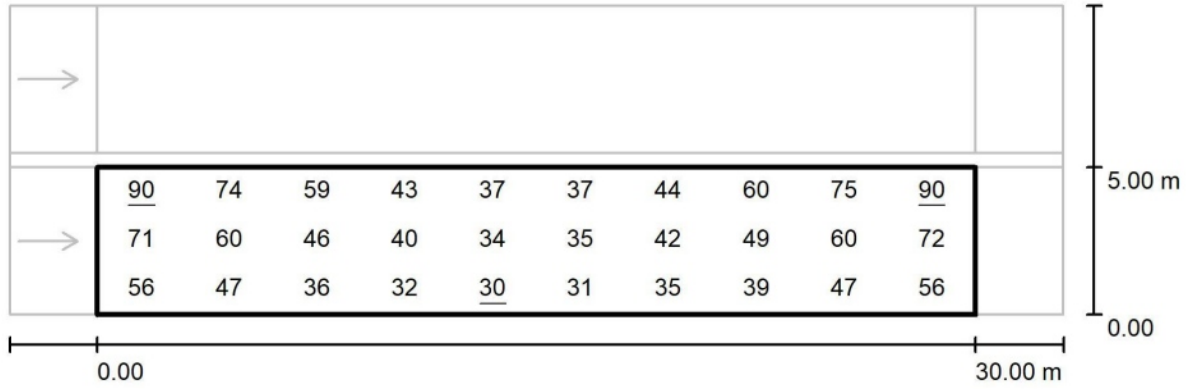
Scale 1 : 258

Grid: 10 x 3 Points

E_{av} [lx]	E_{min} [lx]	E_{max} [lx]	$u0$	E_{min} / E_{max}
51	30	90	0.588	0.332

Operator
 Telephone
 Fax
 e-Mail

Street 1 / Valuation Field Roadway 1 / Value Chart (E)



Values in Lux, Scale 1 : 258

Grid: 10 x 3 Points

E_{av} [lx]
51

E_{min} [lx]
30

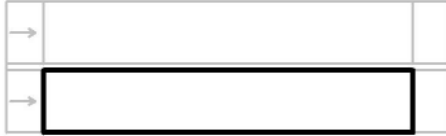
E_{max} [lx]
90

u0
0.588

E_{min} / E_{max}
0.332

Operator
 Telephone
 Fax
 e-Mail

Street 1 / Valuation Field Roadway 1 / Table (E)



4.167	<u>90</u>	74	59	43	37	37	44	60	75	<u>90</u>
2.500	71	60	46	40	34	35	42	49	60	72
0.833	56	47	36	32	<u>30</u>	31	35	39	47	56
m	1.500	4.500	7.500	10.500	13.500	16.500	19.500	22.500	25.500	28.500

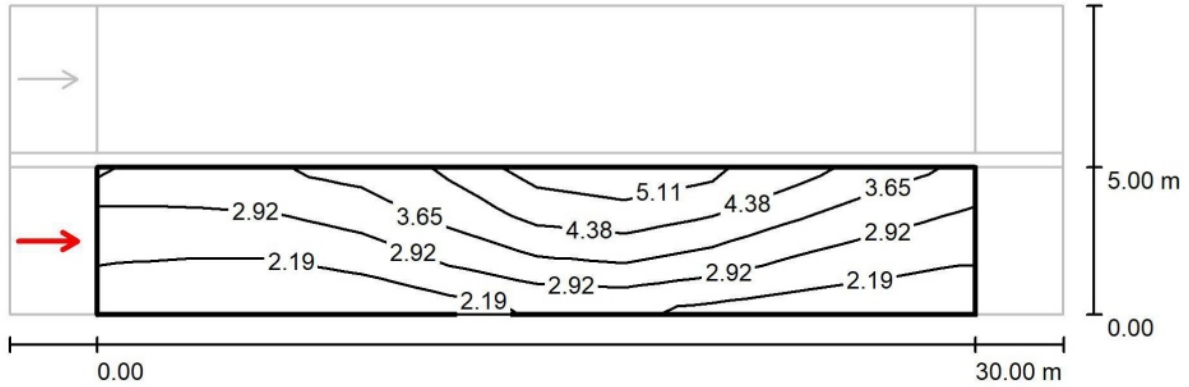
Attention: The coordinates refer to the image above. Values in Lux.

Grid: 10 x 3 Points

E_{av} [lx]	E_{min} [lx]	E_{max} [lx]	u0	E_{min} / E_{max}
51	30	90	0.588	0.332

Operator
 Telephone
 Fax
 e-Mail

Street 1 / Valuation Field Roadway 1 / Observer 1 / Isolines (L)



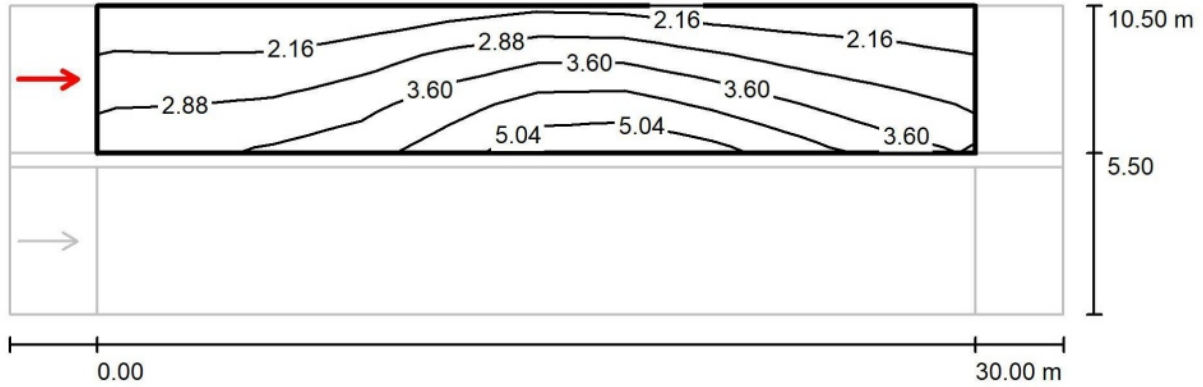
Values in Candela/m², Scale 1 : 258

Grid: 10 x 3 Points
 Observer Position: (-60.000 m, 2.500 m, 1.500 m)
 tarmac: R3, q0: 0.070

	L_{av} [cd/m ²]	U0	UI	TI [%]
Calculated values:	3.14	0.54	0.55	4
Required values according to class ME4b:	≥ 0.75	≥ 0.40	≥ 0.50	≤ 15
Fulfilled/Not fulfilled:	<input checked="" type="checkbox"/>	<input checked="" type="checkbox"/>	<input checked="" type="checkbox"/>	<input checked="" type="checkbox"/>

Operator
 Telephone
 Fax
 e-Mail

Street 1 / Valuation Field Roadway 2 / Observer 3 / Isolines (L)



Values in Candela/m², Scale 1 : 258

Grid: 10 x 3 Points
 Observer Position: (-60.000 m, 8.000 m, 1.500 m)
 tarmac: R3, q0: 0.070

	L_{av} [cd/m ²]	U0	UI	TI [%]
Calculated values:	3.15	0.56	0.59	5
Required values according to class ME4b:	≥ 0.75	≥ 0.40	≥ 0.50	≤ 15
Fulfilled/Not fulfilled:	<input checked="" type="checkbox"/>	<input checked="" type="checkbox"/>	<input checked="" type="checkbox"/>	<input checked="" type="checkbox"/>