

Project-0721

Partner for Contact:
Order No.:
Company:
Customer No.:

Date: 21.07.2025
Operator:



Operator
Telephone
Fax
e-Mail

Table of contents

Project-0721	
Project Cover	1
Table of contents	2
Luminaire parts list	3
LED 80W All-in-one solar street light	
Luminaire Data Sheet	4
Street 1	
Planning data	5
Photometric Results	6
3D Rendering	7
False Color Rendering	8
Valuation Fields	
Valuation Field Roadway 1	
Results overview	9
Isolines (E)	10
Greyscale (E)	11
Value Chart (E)	12
Table (E)	13
Observer	
Observer 1	
Isolines (L)	14
Observer 2	
Isolines (L)	15

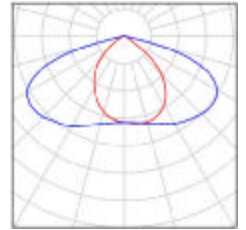


Operator
Telephone
Fax
e-Mail

Project-0721 / Luminaire parts list

6 Pieces LED 80W All-in-one solar street light
Article No.: 80W
Luminous flux (Luminaire): 15028 lm
Luminous flux (Lamps): 15031 lm
Luminaire Wattage: 80.0 W
Luminaire classification according to CIE: 100
CIE flux code: 48 84 98 100 100
Fitting: 1 x User defined (Correction Factor 1.000).

See our luminaire catalog for an image of the luminaire.



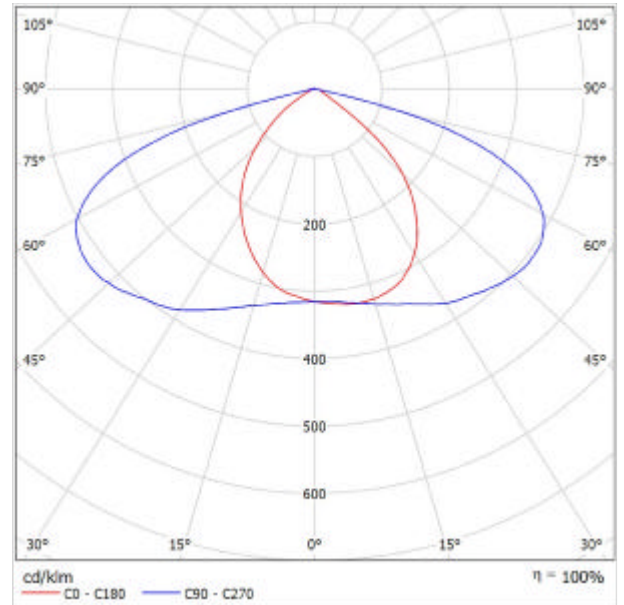


Operator
Telephone
Fax
e-Mail

LED 80W All-in-one solar street light / Luminaire Data Sheet

Luminous emittance 1:

See our luminaire catalog for an image of the luminaire.



Luminaire classification according to CIE: 100
CIE flux code: 48 84 98 100 100

Due to missing symmetry properties, no UGR table can be displayed for this luminaire.



Operator
Telephone
Fax
e-Mail

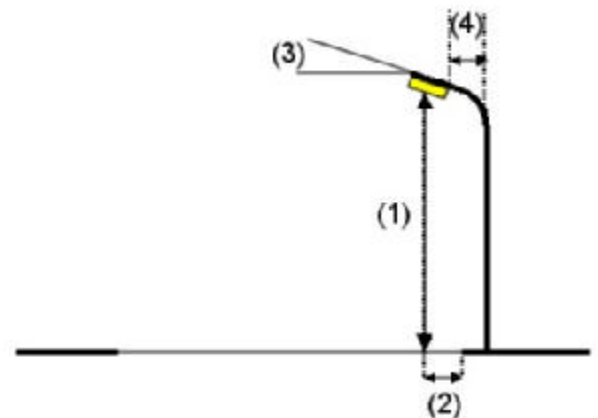
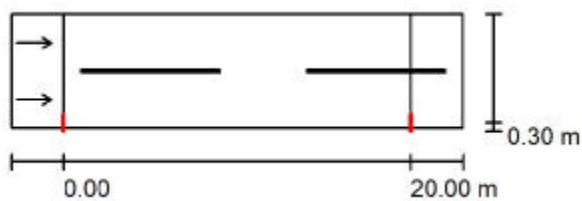
Street 1 / Planning data

Street Profile

Roadway 1 (Width: 6.500 m, Number of lanes: 2, tarmac: R3, q0: 0.070)

Light loss factor: 0.80

Luminaire Arrangements



Luminaire:	LED 80W All-in-one solar street light
Luminous flux (Luminaire):	15028 lm
Luminous flux (Lamps):	15031 lm
Luminaire Wattage:	80.0 W
Arrangement:	Single row, bottom
Pole Distance:	20.000 m
Mounting Height (1):	6.000 m
Height:	6.000 m
Overhang (2):	0.300 m
Boom Angle (3):	15.0 °
Boom Length (4):	0.500 m

Maximum luminous intensities	
at 70°:	332 cd/klm
at 80°:	64 cd/klm
at 90°:	10 cd/klm

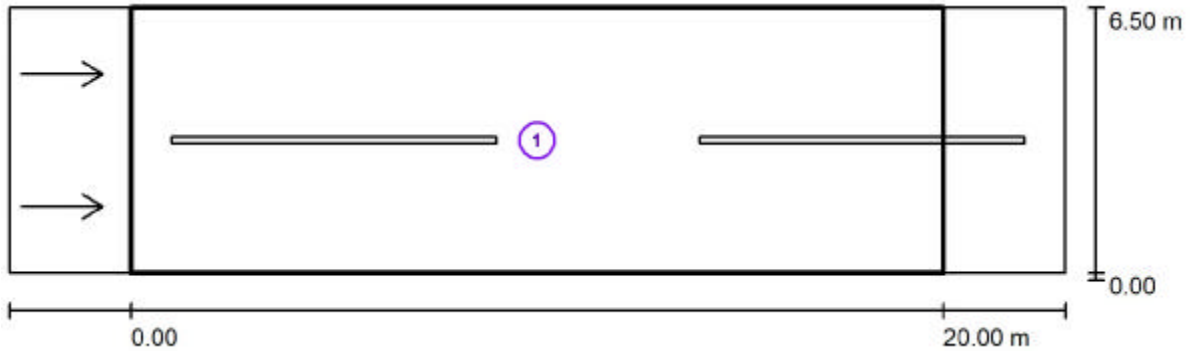
Any direction forming the specified angle from the downward vertical, with the luminaire installed for use.

Arrangement complies with luminous intensity class G3.
Arrangement complies with glare index class D.3.



Operator
Telephone
Fax
e-Mail

Street 1 / Photometric Results



Light loss factor: 0.80

Scale 1:186

Calculation Field List

- 1 Valuation Field Roadway 1
 Length: 20.000 m, Width: 6.500 m
 Grid: 10 x 6 Points
 Accompanying Street Elements: Roadway 1.
 tarmac: R3, q0: 0.070
 Selected Lighting Class: ME4a

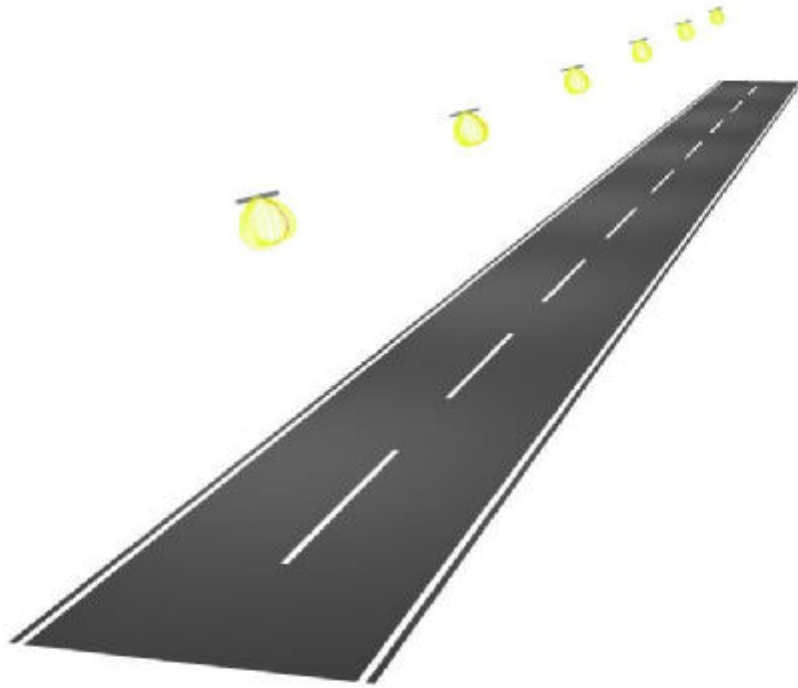
(All lighting performance requirements are met.)

	L_{av} [cd/m ²]	U0	UI	TI [%]	SR
Calculated values:	3.00	0.44	0.85	12	0.53
Required values according to class:	≥ 0.75	≥ 0.40	≥ 0.60	≤ 15	≥ 0.50
Fulfilled/Not fulfilled:	✓	✓	✓	✓	✓



Operator
Telephone
Fax
e-Mail

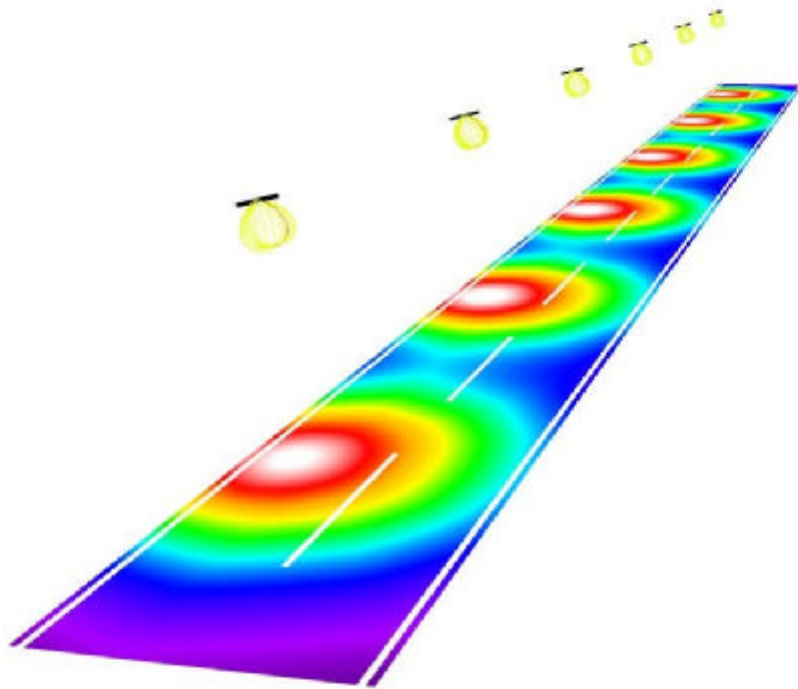
Street 1 / 3D Rendering





Operator
Telephone
Fax
e-Mail

Street 1 / False Color Rendering



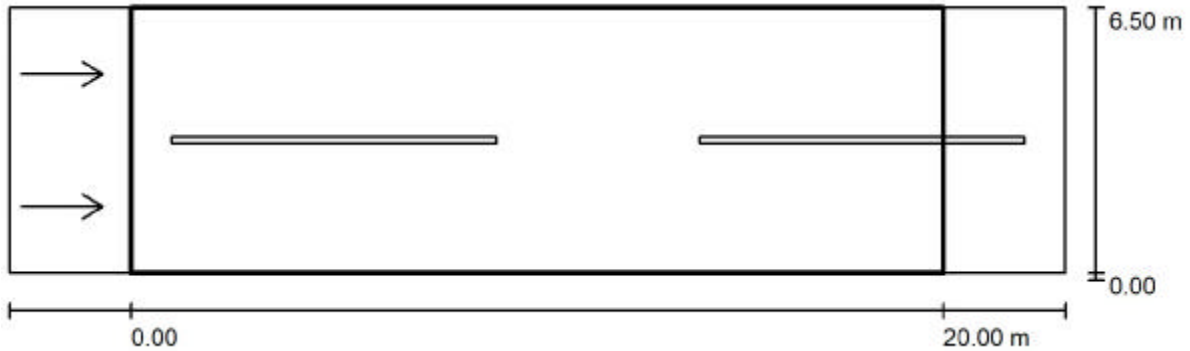
0 12.50 25 37.50 50 62.50 75 87.50 100

lx



Operator
Telephone
Fax
e-Mail

Street 1 / Valuation Field Roadway 1 / Results overview



Light loss factor: 0.80

Scale 1:186

Grid: 10 x 6 Points

Accompanying Street Elements: Roadway 1.

tarmac: R3, q0: 0.070

Selected Lighting Class: ME4a

(All lighting performance requirements are met.)

	L_{av} [cd/m ²]	U0	UI	TI [%]	SR
Calculated values:	3.00	0.44	0.85	12	0.53
Required values according to class:	≥ 0.75	≥ 0.40	≥ 0.60	≤ 15	≥ 0.50
Fulfilled/Not fulfilled:	✓	✓	✓	✓	✓

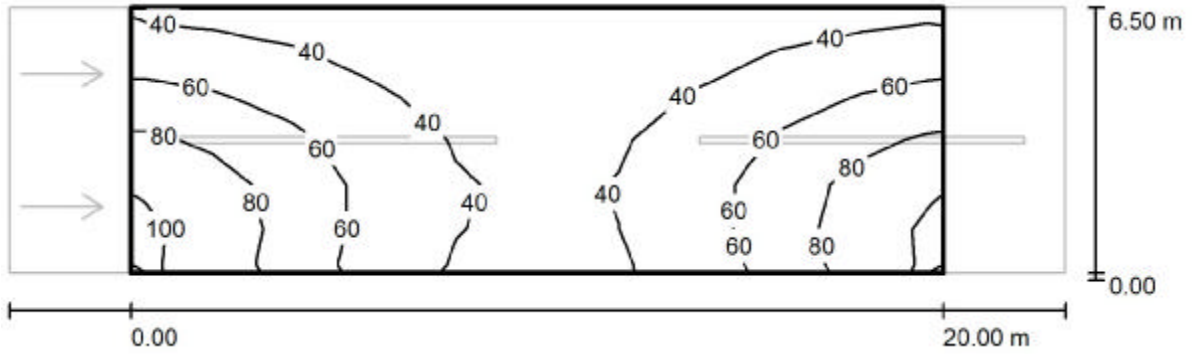
Assigned observer (2 Pieces):

No.	Observer	Position [m]	L_{av} [cd/m ²]	U0	UI	TI [%]
1	Observer 1	(-60.000, 1.625, 1.500)	3.00	0.44	0.85	12
2	Observer 2	(-60.000, 4.875, 1.500)	3.19	0.44	0.89	5



Operator
Telephone
Fax
e-Mail

Street 1 / Valuation Field Roadway 1 / Isolines (E)



Values in Lux, Scale 1 : 186

Grid: 10 x 6 Points

E_{av} [lx]
53

E_{min} [lx]
25

E_{max} [lx]
99

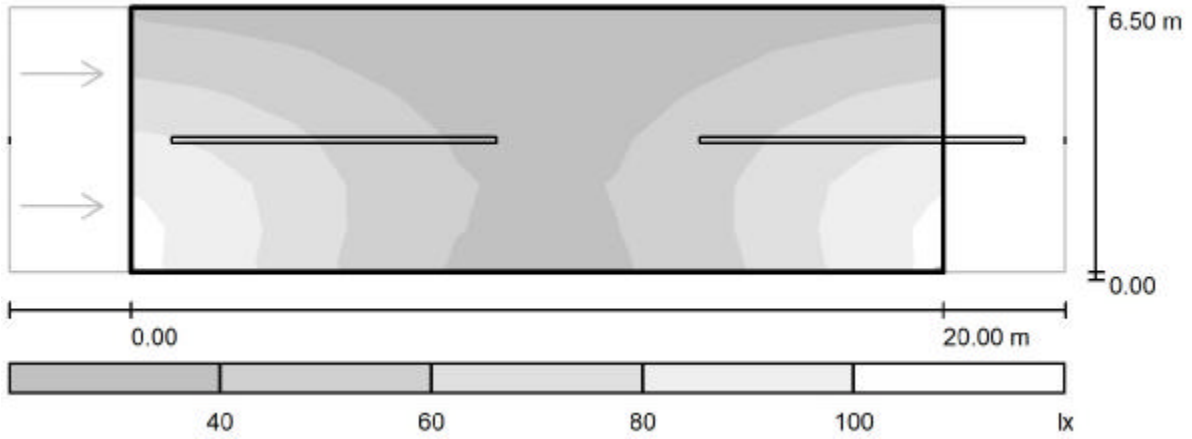
u_0
0.467

E_{min} / E_{max}
0.250



Operator
Telephone
Fax
e-Mail

Street 1 / Valuation Field Roadway 1 / Greyscale (E)



Scale 1 : 186

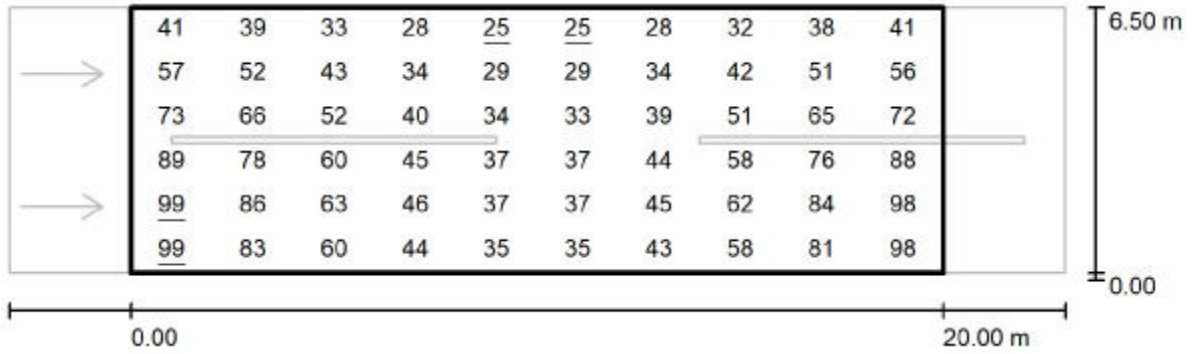
Grid: 10 x 6 Points

E_{av} [lx]	E_{min} [lx]	E_{max} [lx]	u0	E_{min} / E_{max}
53	25	99	0.467	0.250



Operator
Telephone
Fax
e-Mail

Street 1 / Valuation Field Roadway 1 / Value Chart (E)



Values in Lux, Scale 1 : 186

Grid: 10 x 6 Points

E_{av} [lx]
53

E_{min} [lx]
25

E_{max} [lx]
99

u_0
0.467

E_{min} / E_{max}
0.250



Operator
 Telephone
 Fax
 e-Mail

Street 1 / Valuation Field Roadway 1 / Table (E)



5.958	41	39	33	28	<u>25</u>	<u>25</u>	28	32	38	41
4.875	57	52	43	34	29	29	34	42	51	56
3.792	73	66	52	40	34	33	39	51	65	72
2.708	89	78	60	45	37	37	44	58	76	88
1.625	<u>99</u>	86	63	46	37	37	45	62	84	98
0.542	<u>99</u>	83	60	44	35	35	43	58	81	98
m	1.000	3.000	5.000	7.000	9.000	11.000	13.000	15.000	17.000	19.000

Attention: The coordinates refer to the image above. Values in Lux.

Grid: 10 x 6 Points

E_{av} [lx]
53

E_{min} [lx]
25

E_{max} [lx]
99

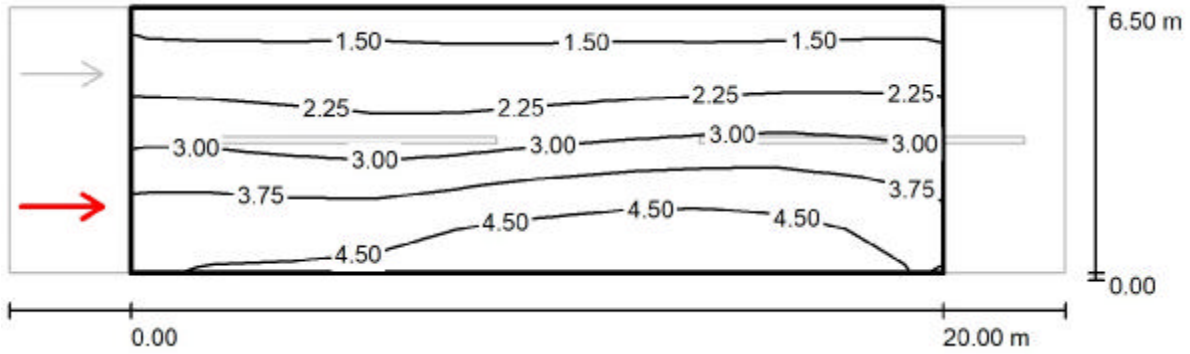
u0
0.467

E_{min} / E_{max}
0.250



Operator
 Telephone
 Fax
 e-Mail

Street 1 / Valuation Field Roadway 1 / Observer 1 / Isolines (L)



Values in Candela/m², Scale 1 : 186

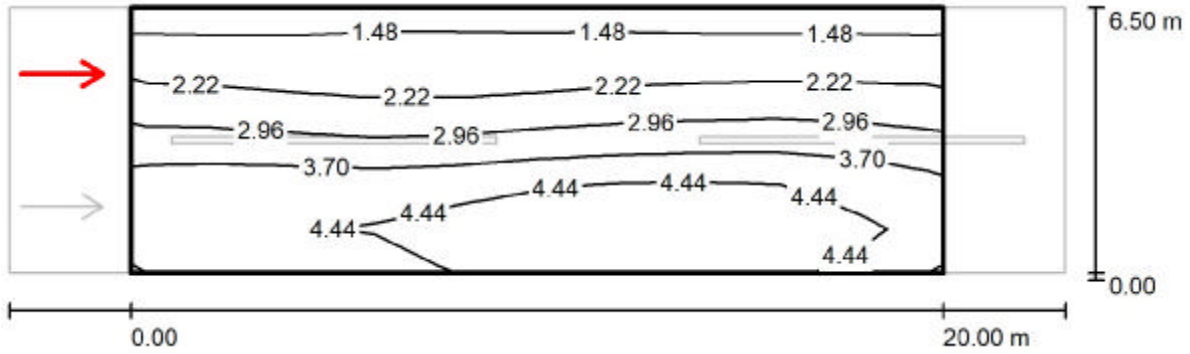
Grid: 10 x 6 Points
 Observer Position: (-60.000 m, 1.625 m, 1.500 m)
 tarmac: R3, q0: 0.070

	L_{av} [cd/m²]	U0	UI	TI [%]
Calculated values:	3.00	0.44	0.85	12
Required values according to class ME4a:	≥ 0.75	≥ 0.40	≥ 0.60	≤ 15
Fulfilled/Not fulfilled:	<input checked="" type="checkbox"/>	<input checked="" type="checkbox"/>	<input checked="" type="checkbox"/>	<input checked="" type="checkbox"/>



Operator
 Telephone
 Fax
 e-Mail

Street 1 / Valuation Field Roadway 1 / Observer 2 / Isolines (L)



Values in Candela/m², Scale 1 : 186

Grid: 10 x 6 Points
 Observer Position: (-60.000 m, 4.875 m, 1.500 m)
 tarmac: R3, q0: 0.070

	L_{av} [cd/m ²]	U0	UI	TI [%]
Calculated values:	3.19	0.44	0.89	5
Required values according to class ME4a:	≥ 0.75	≥ 0.40	≥ 0.60	≤ 15
Fulfilled/Not fulfilled:	<input checked="" type="checkbox"/>	<input checked="" type="checkbox"/>	<input checked="" type="checkbox"/>	<input checked="" type="checkbox"/>