

Project-0811

Partner for Contact:
Order No.:
Company:
Customer No.:

Date: 11.08.2025
Operator:



Operator
Telephone
Fax
e-Mail

Table of contents

Project-0811	
Project Cover	1
Table of contents	2
Luminaire parts list	3
AN-SLV2-100W	
Luminaire Data Sheet	4
Street 1	
Planning data	5
Photometric Results	6
3D Rendering	7
False Color Rendering	8
Valuation Fields	
Valuation Field Roadway 1	
Results overview	9
Isolines (E)	10
Greyscale (E)	11
Value Chart (E)	12
Table (E)	13
Observer	
Observer 1	
Isolines (L)	15

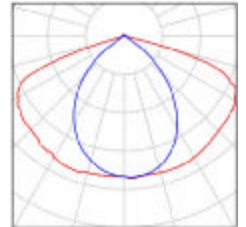


Operator
Telephone
Fax
e-Mail

Project-0811 / Luminaire parts list

4 Pieces AN-SLV2-100W
Article No.:
Luminous flux (Luminaire): 17111 lm
Luminous flux (Lamps): 17111 lm
Luminaire Wattage: 0.0 W
Luminaire classification according to CIE: 99
CIE flux code: 51 85 99 99 100
Fitting: 1 x User defined (Correction Factor 1.000).

See our luminaire catalog for an image of the luminaire.



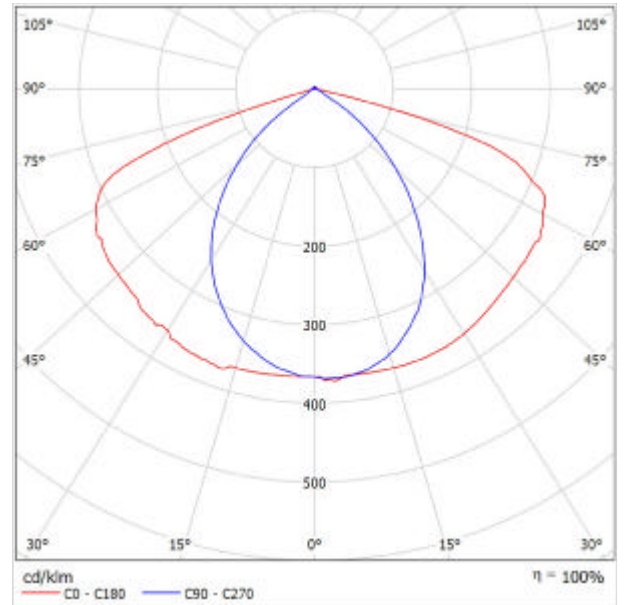


Operator
Telephone
Fax
e-Mail

AN-SLV2-100W / Luminaire Data Sheet

Luminous emittance 1:

See our luminaire catalog for an image of the luminaire.



Luminaire classification according to CIE: 99
CIE flux code: 51 85 99 99 100

Due to missing symmetry properties, no UGR table can be displayed for this luminaire.



Operator
Telephone
Fax
e-Mail

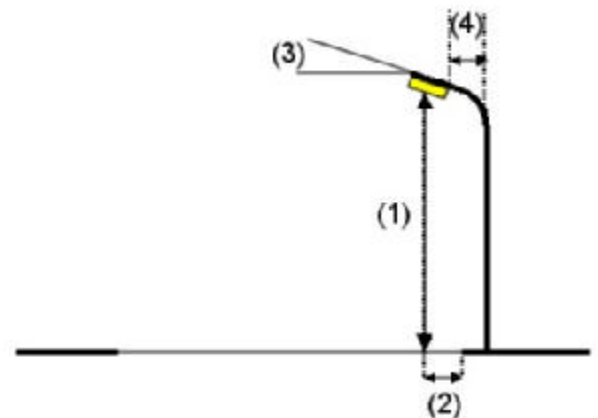
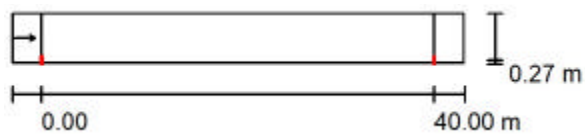
Street 1 / Planning data

Street Profile

Roadway 1 (Width: 5.000 m, Number of lanes: 1, tarmac: R3, q0: 0.070)

Light loss factor: 0.80

Luminaire Arrangements



Luminaire:	AN-SLV2-100W
Luminous flux (Luminaire):	17111 lm
Luminous flux (Lamps):	17111 lm
Luminaire Wattage:	0.0 W
Arrangement:	Single row, bottom
Pole Distance:	40.000 m
Mounting Height (1):	7.000 m
Height:	6.903 m
Overhang (2):	0.300 m
Boom Angle (3):	15.0 °
Boom Length (4):	0.500 m

Maximum luminous intensities

at 70°:	301 cd/klm
at 80°:	132 cd/klm
at 90°:	8.74 cd/klm

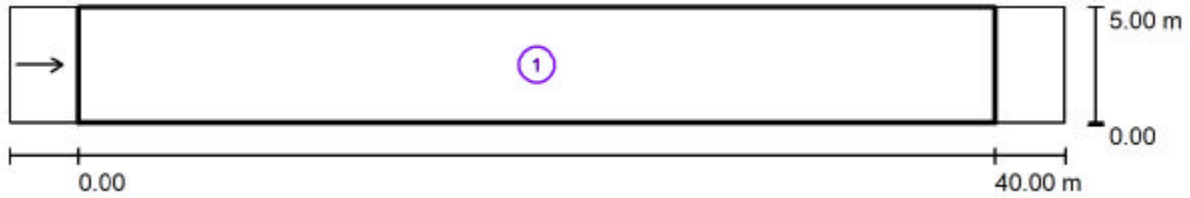
Any direction forming the specified angle from the downward vertical, with the luminaire installed for use.

Arrangement complies with luminous intensity class G2.
Arrangement complies with glare index class D.4.



Operator
Telephone
Fax
e-Mail

Street 1 / Photometric Results



Light loss factor: 0.80

Scale 1:329

Calculation Field List

- 1 Valuation Field Roadway 1
Length: 40.000 m, Width: 5.000 m
Grid: 14 x 3 Points
Accompanying Street Elements: Roadway 1.
tarmac: R3, q0: 0.070
Selected Lighting Class: ME4a

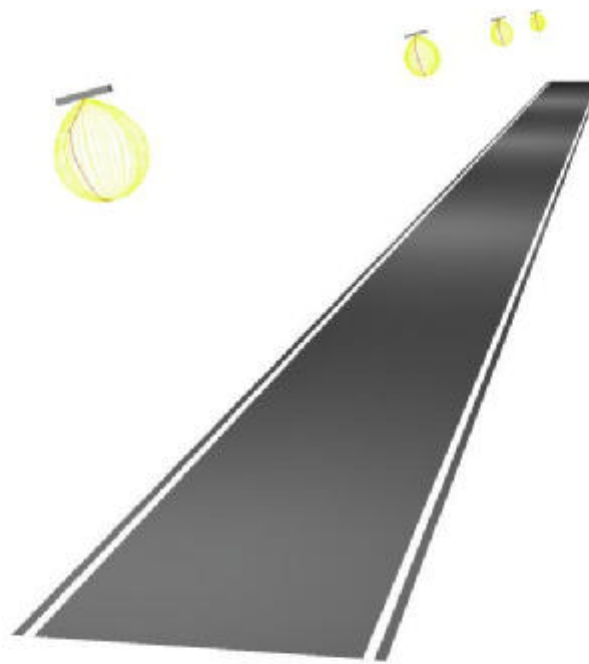
(Not all lighting performance requirements are met.)

	L_{av} [cd/m ²]	U0	UI	TI [%]	SR
Calculated values:	1.59	0.27	0.15	11	0.72
Required values according to class:	≥ 0.75	≥ 0.40	≥ 0.60	≤ 15	≥ 0.50
Fulfilled/Not fulfilled:	✓	✗	✗	✓	✓



Operator
Telephone
Fax
e-Mail

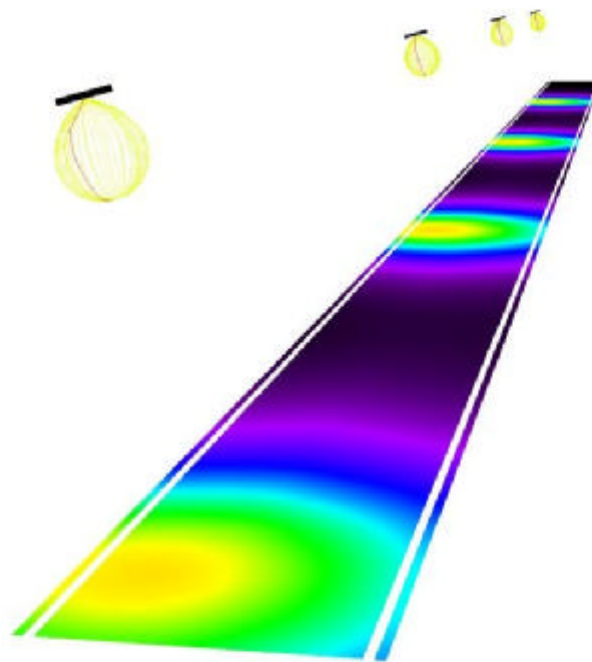
Street 1 / 3D Rendering





Operator
Telephone
Fax
e-Mail

Street 1 / False Color Rendering

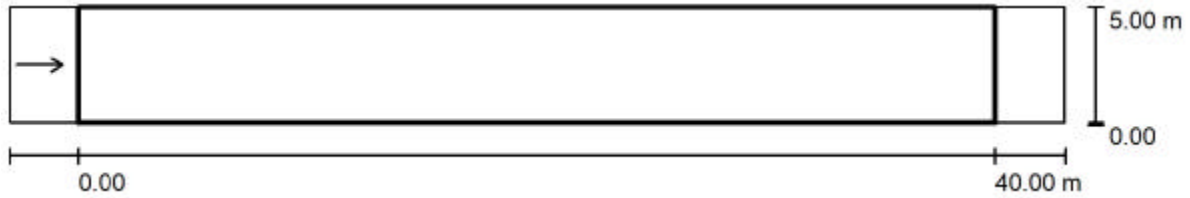


0 18.75 37.50 56.25 75 93.75 112.50 131.25 150 lx



Operator
 Telephone
 Fax
 e-Mail

Street 1 / Valuation Field Roadway 1 / Results overview



Light loss factor: 0.80

Scale 1:329

Grid: 14 x 3 Points

Accompanying Street Elements: Roadway 1.

tarmac: R3, q0: 0.070

Selected Lighting Class: ME4a

L_{av} [cd/m ²]	U0	UI	TI [%]	SR
1.59	0.27	0.15	11	0.72

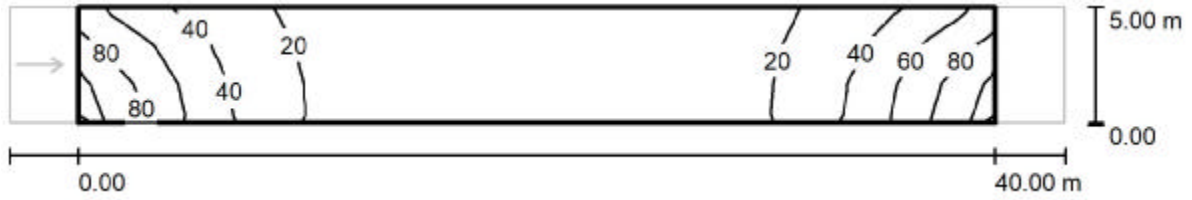
Assigned observer (1 Pieces):

No.	Observer	Position [m]	L_{av} [cd/m ²]	U0	UI	TI [%]
1	Observer 1	(-60.000, 2.500, 1.500)	1.59	0.27	0.15	11



Operator
Telephone
Fax
e-Mail

Street 1 / Valuation Field Roadway 1 / Isolines (E)



Values in Lux, Scale 1 : 329

Grid: 14 x 3 Points

E_{av} [lx]
29

E_{min} [lx]
4.24

E_{max} [lx]
94

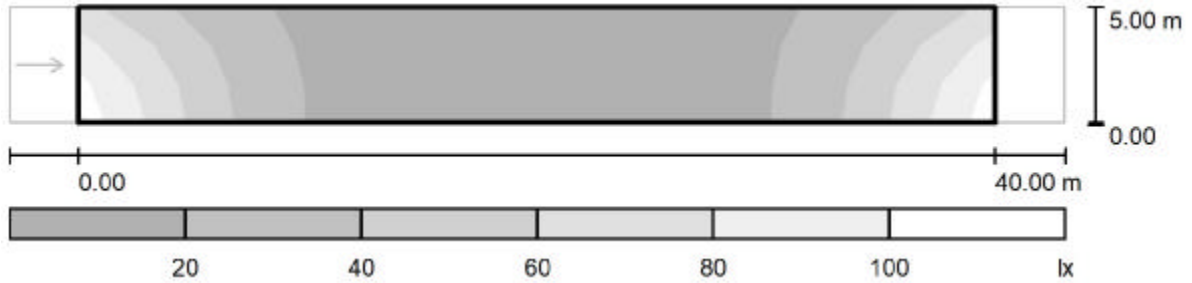
u_0
0.145

E_{min} / E_{max}
0.045



Operator
Telephone
Fax
e-Mail

Street 1 / Valuation Field Roadway 1 / Greyscale (E)



Scale 1 : 329

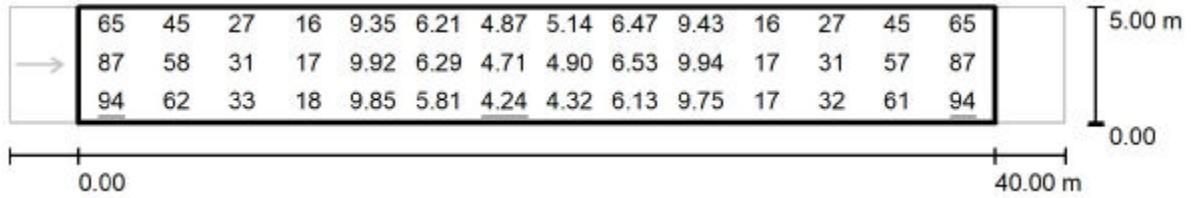
Grid: 14 x 3 Points

E_{av} [lx]	E_{min} [lx]	E_{max} [lx]	u0	E_{min} / E_{max}
29	4.24	94	0.145	0.045



Operator
 Telephone
 Fax
 e-Mail

Street 1 / Valuation Field Roadway 1 / Value Chart (E)



Values in Lux, Scale 1 : 329

Grid: 14 x 3 Points

E_{av} [lx]	E_{min} [lx]	E_{max} [lx]	u0	E_{min} / E_{max}
29	4.24	94	0.145	0.045



Operator
 Telephone
 Fax
 e-Mail

Street 1 / Valuation Field Roadway 1 / Table (E)

- Current Selection
- Further Selections



4.167	65	45	27	16	9.35	6.21	4.87	5.14	6.47	9.43
2.500	87	58	31	17	9.92	6.29	4.71	4.90	6.53	9.94
0.833	<u>94</u>	62	33	18	9.85	5.81	<u>4.24</u>	4.32	6.13	9.75
m	1.429	4.286	7.143	10.000	12.857	15.714	18.571	21.429	24.286	27.143

Attention: The coordinates refer to the image above. Values in Lux.

Grid: 14 x 3 Points

E_{av} [lx]	E_{min} [lx]	E_{max} [lx]	u0	E_{min} / E_{max}
29	4.24	94	0.145	0.045



Operator
 Telephone
 Fax
 e-Mail

Street 1 / Valuation Field Roadway 1 / Table (E)

- Current Selection
- Further Selections



4.167	16	27	45	65
2.500	17	31	57	87
0.833	17	32	61	<u>94</u>
m	30.000	32.857	35.714	38.571

Attention: The coordinates refer to the image above. Values in Lux.

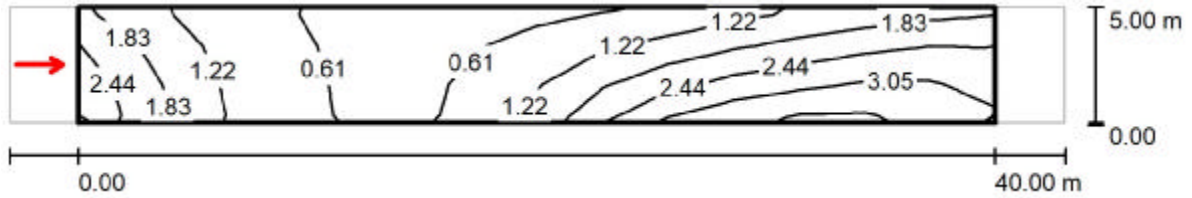
Grid: 14 x 3 Points

E_{av} [lx]	E_{min} [lx]	E_{max} [lx]	u0	E_{min} / E_{max}
29	4.24	94	0.145	0.045



Operator
 Telephone
 Fax
 e-Mail

Street 1 / Valuation Field Roadway 1 / Observer 1 / Isolines (L)



Values in Candela/m², Scale 1 : 329

Grid: 14 x 3 Points
 Observer Position: (-60.000 m, 2.500 m, 1.500 m)
 tarmac: R3, q0: 0.070

L_{av} [cd/m ²]	U0	UI	TI [%]
1.59	0.27	0.15	11