

Project -0225

Partner for Contact:
Order No.:
Company:
Customer No.:

Date: 25.02.2025
Operator:



Operator
Telephone
Fax
e-Mail

Table of contents

Project -0225	
Project Cover	1
Table of contents	2
Luminaire parts list	3
AN-SLB-200W	
Luminaire Data Sheet	4
Street 1	
Planning data	5
Photometric Results	6
3D Rendering	8
False Color Rendering	9
Valuation Fields	
Valuation Field Roadway 1	
Results overview	10
Isolines (E)	11
Greyscale (E)	12
Value Chart (E)	13
Table (E)	14
Observer	
Observer 1	
Isolines (L)	16
Observer 2	
Isolines (L)	17
Valuation Field Roadway 2	
Observer	
Observer 3	
Isolines (L)	18
Observer 4	
Isolines (L)	19

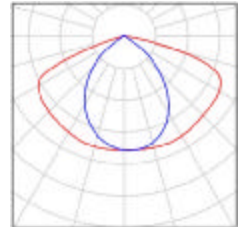


Operator
Telephone
Fax
e-Mail

Project -0225 / Luminaire parts list

12 Pieces AN-SLB-200W
Article No.:
Luminous flux (Luminaire): 32157 lm
Luminous flux (Lamps): 32159 lm
Luminaire Wattage: 0.0 W
Luminaire classification according to CIE: 99
CIE flux code: 50 84 98 99 100
Fitting: 1 x User defined (Correction Factor 1.000).

See our luminaire catalog for an image of the luminaire.



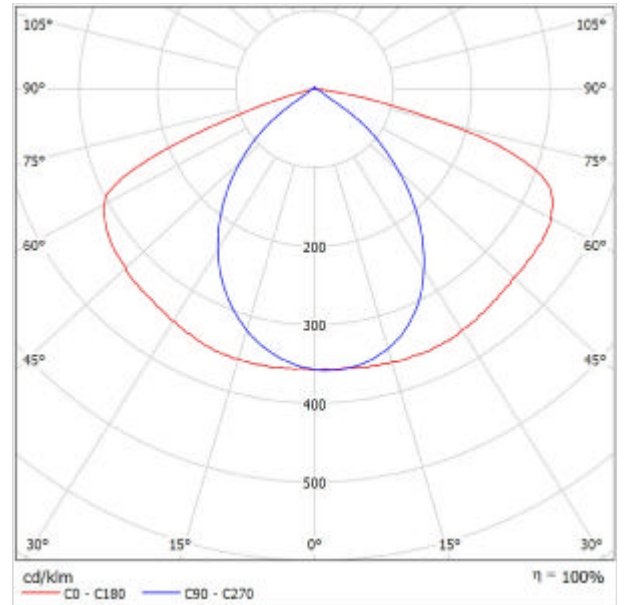


Operator
Telephone
Fax
e-Mail

AN-SLB-200W / Luminaire Data Sheet

Luminous emittance 1:

See our luminaire catalog for an image of the luminaire.



Luminaire classification according to CIE: 99
CIE flux code: 50 84 98 99 100

Due to missing symmetry properties, no UGR table can be displayed for this luminaire.



Operator
Telephone
Fax
e-Mail

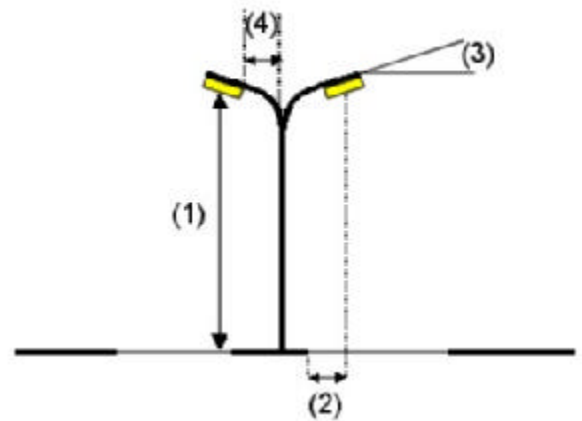
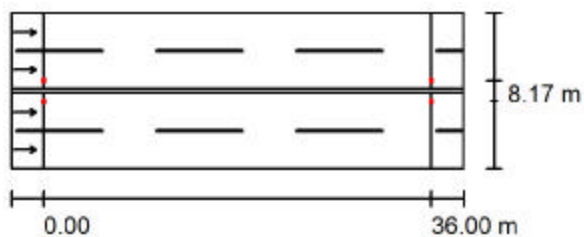
Street 1 / Planning data

Street Profile

Roadway 2 (Width: 7.000 m, Number of lanes: 2, tarmac: R3, q0: 0.070)
 Median 1 (Width: 0.400 m, Height: 0.000 m)
 Roadway 1 (Width: 7.000 m, Number of lanes: 2, tarmac: R3, q0: 0.070)

Light loss factor: 0.67

Luminaire Arrangements



Luminaire: AN-SLB-200W
 Luminous flux (Luminaire): 32157 lm
 Luminous flux (Lamps): 32159 lm
 Luminaire Wattage: 0.0 W
 Arrangement: on Median
 Pole Distance: 36.000 m
 Mounting Height (1): 12.000 m
 Height: 11.903 m
 Overhang (2): 0.800 m
 Boom Angle (3): 15.0 °
 Boom Length (4): 0.974 m

Maximum luminous intensities
 at 70°: 320 cd/klm
 at 80°: 171 cd/klm
 at 90°: 13 cd/klm

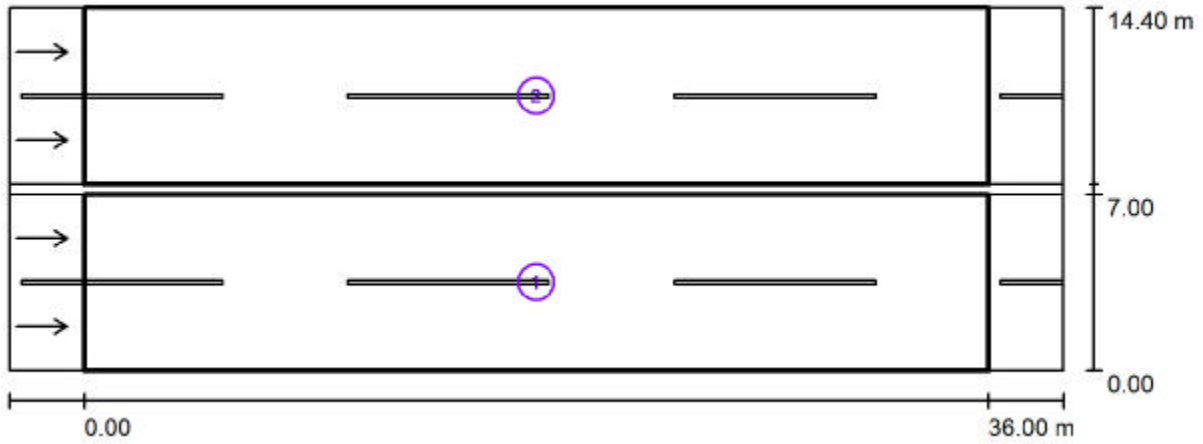
Any direction forming the specified angle from the downward vertical, with the luminaire installed for use.

Arrangement complies with luminous intensity class G1.
 Arrangement complies with glare index class D.0.



Operator
Telephone
Fax
e-Mail

Street 1 / Photometric Results



Light loss factor: 0.67

Scale 1:301

Calculation Field List

- 1 Valuation Field Roadway 1
 Length: 36.000 m, Width: 7.000 m
 Grid: 12 x 6 Points
 Accompanying Street Elements: Roadway 1.
 tarmac: R3, q0: 0.070
 Selected Lighting Class: ME4a

(All lighting performance requirements are met.)

	L_{av} [cd/m ²]	U0	UI	TI [%]	SR
Calculated values:	2.83	0.48	0.76	6	0.85
Required values according to class:	≥ 0.75	≥ 0.40	≥ 0.60	≤ 15	≥ 0.50
Fulfilled/Not fulfilled:	✓	✓	✓	✓	✓



Operator
 Telephone
 Fax
 e-Mail

Street 1 / Photometric Results

Calculation Field List

- 2 Valuation Field Roadway 2
 Length: 36.000 m, Width: 7.000 m
 Grid: 12 x 6 Points
 Accompanying Street Elements: Roadway 2.
 tarmac: R3, q0: 0.070
 Selected Lighting Class: ME4a

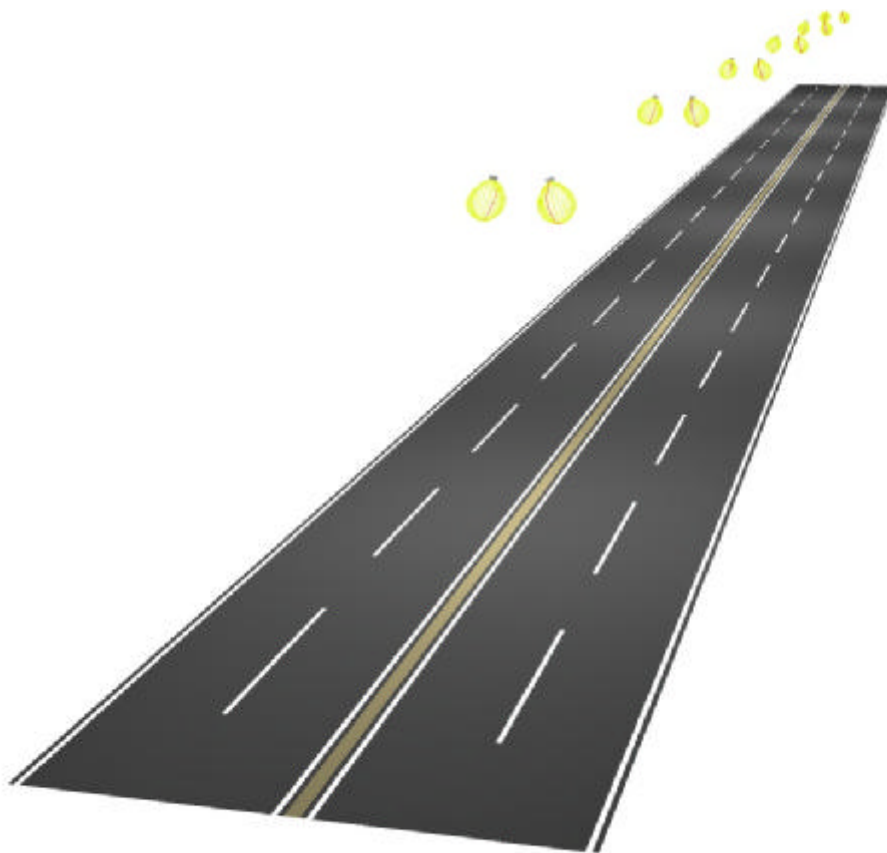
(All lighting performance requirements are met.)

	L_{av} [cd/m ²]	U0	UI	TI [%]	SR
Calculated values:	2.75	0.48	0.78	6	0.85
Required values according to class:	≥ 0.75	≥ 0.40	≥ 0.60	≤ 15	≥ 0.50
Fulfilled/Not fulfilled:	<input checked="" type="checkbox"/>	<input checked="" type="checkbox"/>	<input checked="" type="checkbox"/>	<input checked="" type="checkbox"/>	<input checked="" type="checkbox"/>



Operator
Telephone
Fax
e-Mail

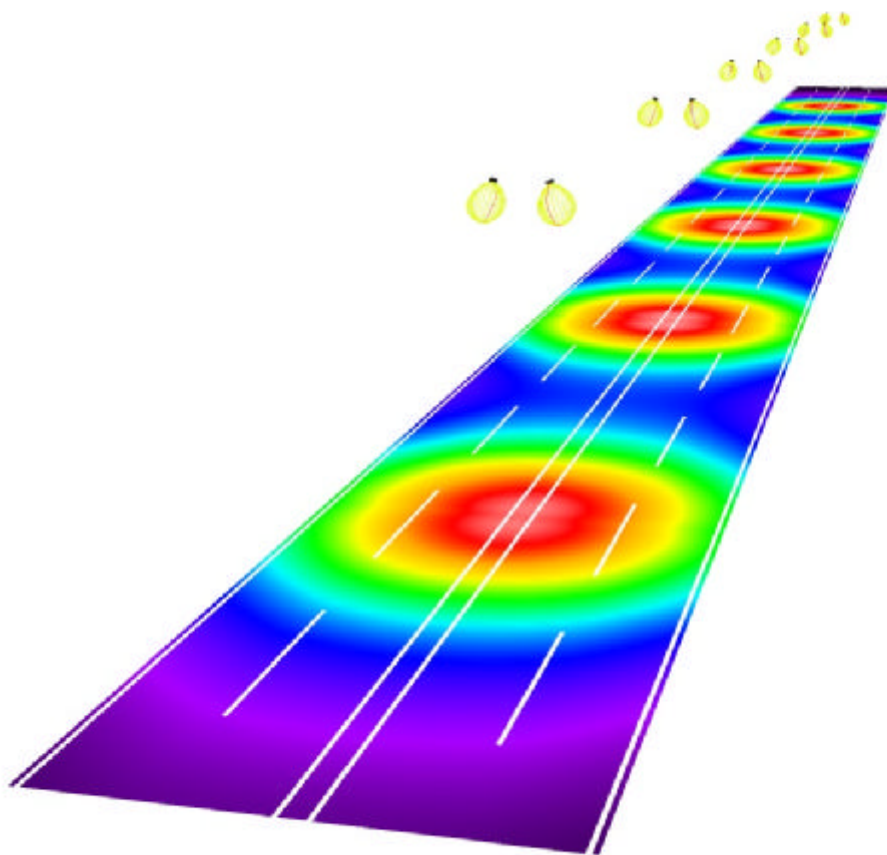
Street 1 / 3D Rendering





Operator
Telephone
Fax
e-Mail

Street 1 / False Color Rendering



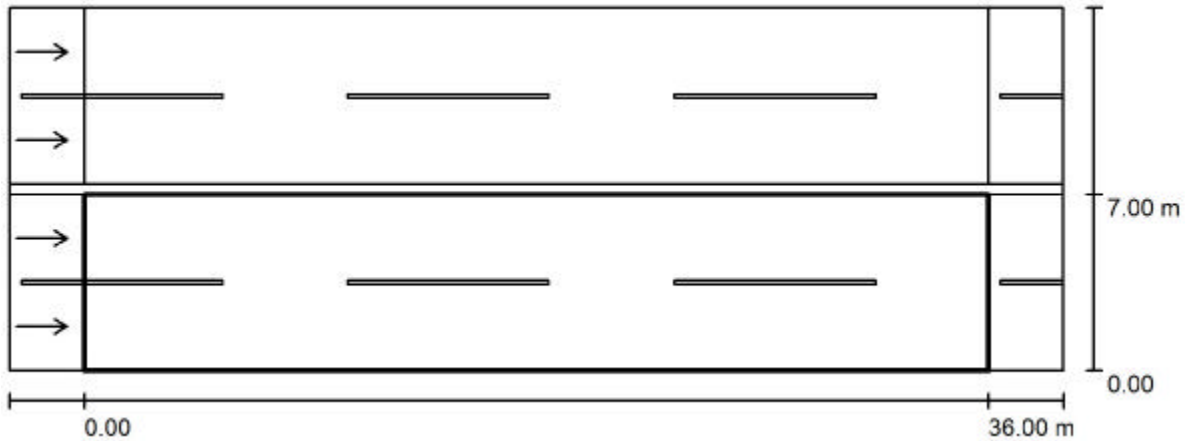
0 12.50 25 37.50 50 62.50 75 87.50 100

lx



Operator
Telephone
Fax
e-Mail

Street 1 / Valuation Field Roadway 1 / Results overview



Light loss factor: 0.67

Scale 1:301

Grid: 12 x 6 Points

Accompanying Street Elements: Roadway 1.

tarmac: R3, q0: 0.070

Selected Lighting Class: ME4a

(All lighting performance requirements are met.)

	L_{av} [cd/m ²]	U0	UI	TI [%]	SR
Calculated values:	2.83	0.48	0.76	6	0.85
Required values according to class:	≥ 0.75	≥ 0.40	≥ 0.60	≤ 15	≥ 0.50
Fulfilled/Not fulfilled:	<input checked="" type="checkbox"/>	<input checked="" type="checkbox"/>	<input checked="" type="checkbox"/>	<input checked="" type="checkbox"/>	<input checked="" type="checkbox"/>

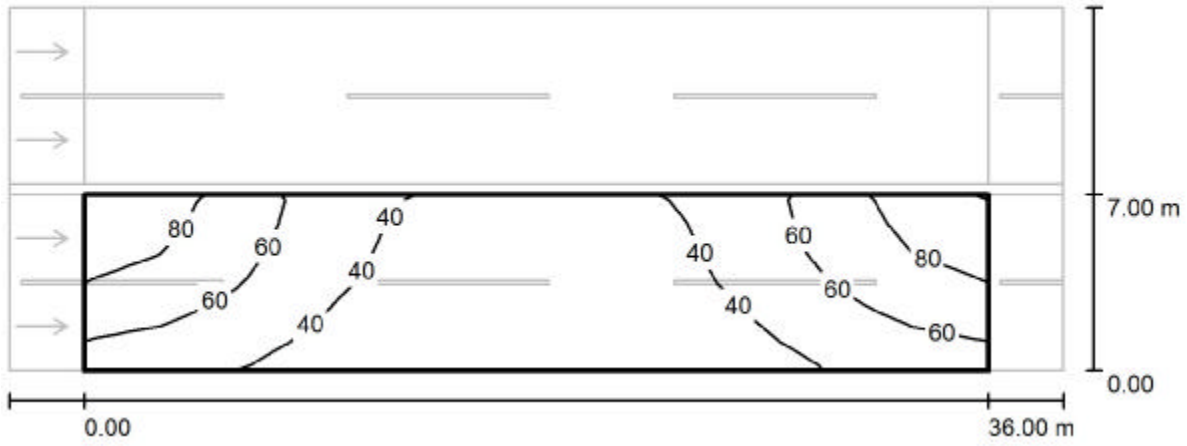
Assigned observer (2 Pieces):

No.	Observer	Position [m]	L_{av} [cd/m ²]	U0	UI	TI [%]
1	Observer 1	(-60.000, 1.750, 1.500)	3.00	0.51	0.76	5
2	Observer 2	(-60.000, 5.250, 1.500)	2.83	0.48	0.87	6



Operator
 Telephone
 Fax
 e-Mail

Street 1 / Valuation Field Roadway 1 / Isolines (E)



Values in Lux, Scale 1 : 301

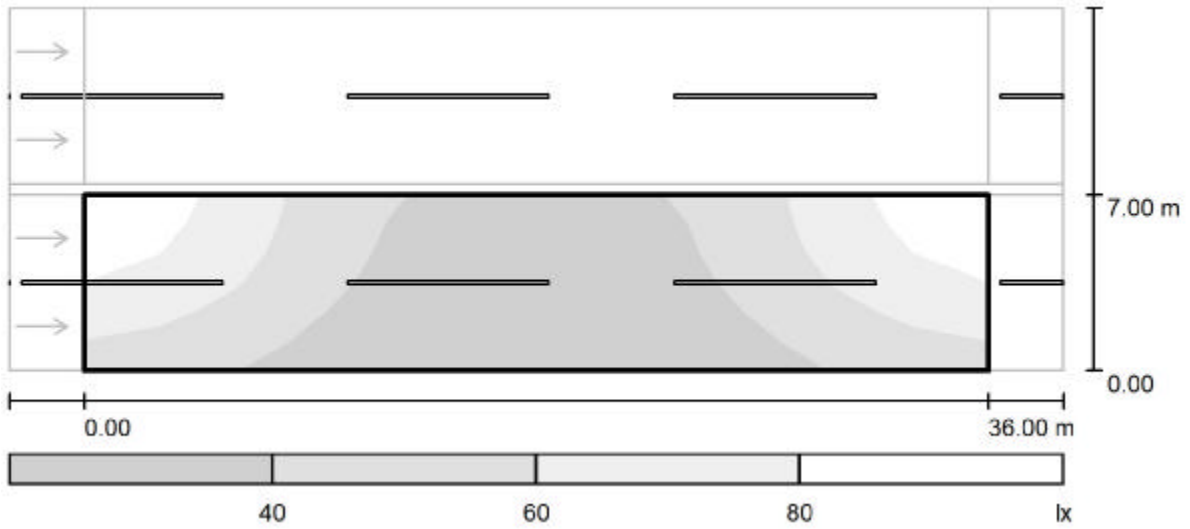
Grid: 12 x 6 Points

E_{av} [lx]	E_{min} [lx]	E_{max} [lx]	u0	E_{min} / E_{max}
49	21	93	0.426	0.223



Operator
Telephone
Fax
e-Mail

Street 1 / Valuation Field Roadway 1 / Greyscale (E)



Scale 1 : 301

Grid: 12 x 6 Points

E_{av} [lx]
49

E_{min} [lx]
21

E_{max} [lx]
93

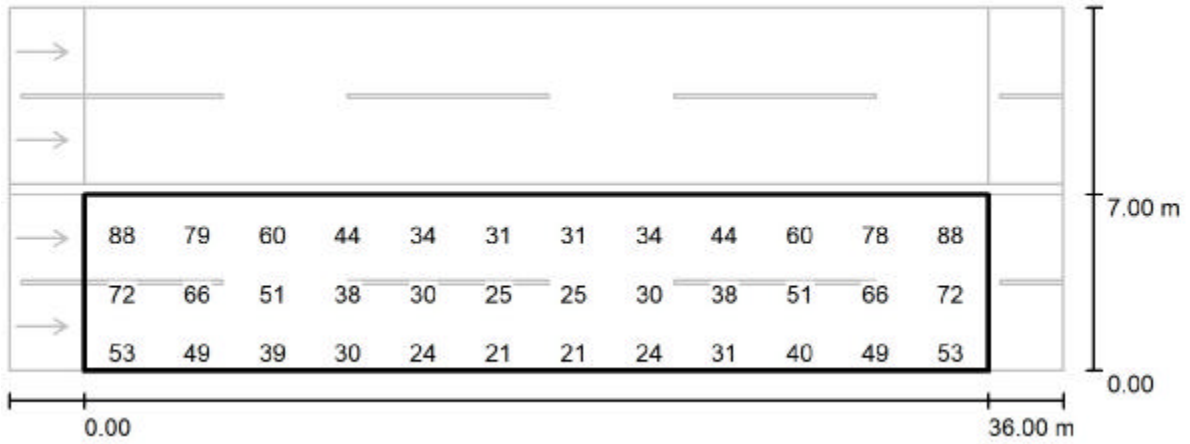
u_0
0.426

E_{min} / E_{max}
0.223



Operator
Telephone
Fax
e-Mail

Street 1 / Valuation Field Roadway 1 / Value Chart (E)



Values in Lux, Scale 1 : 301

Not all calculated values could be displayed.

Grid: 12 x 6 Points

E_{av} [lx]	E_{min} [lx]	E_{max} [lx]	u0	E_{min} / E_{max}
49	21	93	0.426	0.223



Operator
 Telephone
 Fax
 e-Mail

Street 1 / Valuation Field Roadway 1 / Table (E)

- Current Selection
- Further Selections



6.417	<u>93</u>	81	61	45	37	32	32	37	45	61
5.250	88	79	60	44	34	31	31	34	44	60
4.083	81	73	56	41	32	29	28	32	41	56
2.917	72	66	51	38	30	25	25	30	38	51
1.750	62	58	45	34	27	23	23	28	35	46
0.583	53	49	39	30	24	<u>21</u>	<u>21</u>	24	31	40
m	1.500	4.500	7.500	10.500	13.500	16.500	19.500	22.500	25.500	28.500

Attention: The coordinates refer to the image above. Values in Lux.

Grid: 12 x 6 Points

E_{av} [lx]
49

E_{min} [lx]
21

E_{max} [lx]
93

u0
0.426

E_{min} / E_{max}
0.223



Operator
 Telephone
 Fax
 e-Mail

Street 1 / Valuation Field Roadway 1 / Table (E)

- Current Selection
- Further Selections



6.417	82	92
5.250	78	88
4.083	73	81
2.917	66	72
1.750	58	63
0.583	49	53
m	31.500	34.500

Attention: The coordinates refer to the image above. Values in Lux.

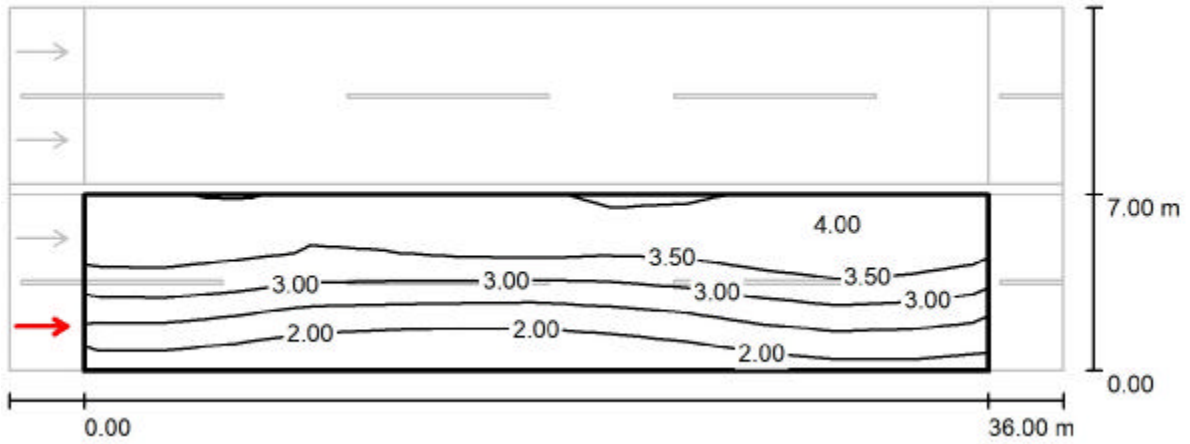
Grid: 12 x 6 Points

E_{av} [lx]	E_{min} [lx]	E_{max} [lx]	u0	E_{min} / E_{max}
49	21	93	0.426	0.223



Operator
Telephone
Fax
e-Mail

Street 1 / Valuation Field Roadway 1 / Observer 1 / Isolines (L)



Values in Candela/m², Scale 1 : 301

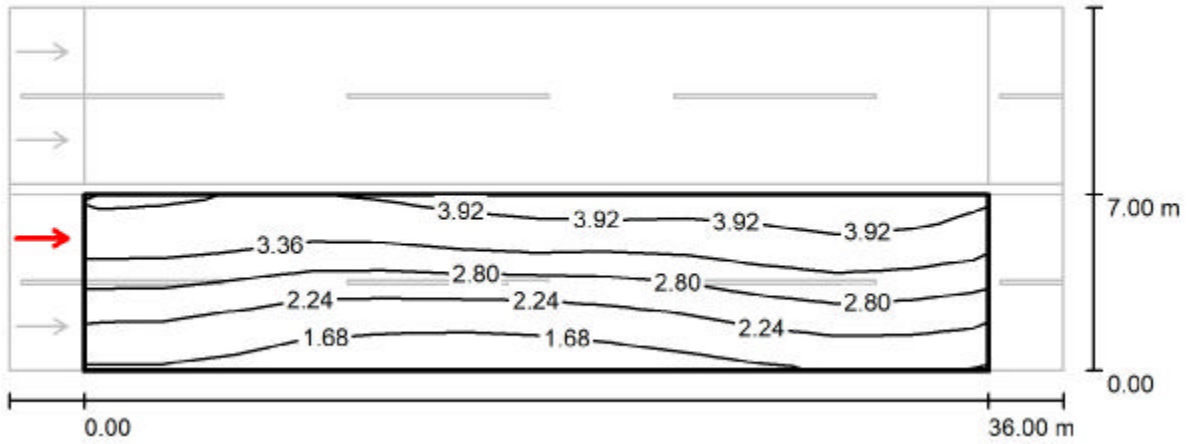
Grid: 12 x 6 Points
Observer Position: (-60.000 m, 1.750 m, 1.500 m)
tarmac: R3, q0: 0.070

	L_{av} [cd/m ²]	U0	UI	TI [%]
Calculated values:	3.00	0.51	0.76	5
Required values according to class ME4a:	≥ 0.75	≥ 0.40	≥ 0.60	≤ 15
Fulfilled/Not fulfilled:	<input checked="" type="checkbox"/>	<input checked="" type="checkbox"/>	<input checked="" type="checkbox"/>	<input checked="" type="checkbox"/>



Operator
Telephone
Fax
e-Mail

Street 1 / Valuation Field Roadway 1 / Observer 2 / Isolines (L)



Values in Candela/m², Scale 1 : 301

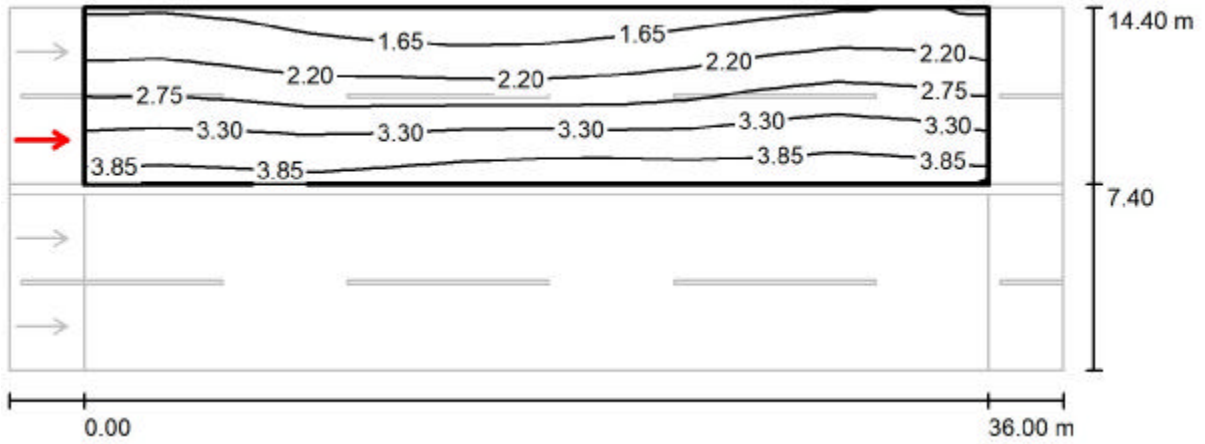
Grid: 12 x 6 Points
Observer Position: (-60.000 m, 5.250 m, 1.500 m)
tarmac: R3, q0: 0.070

	L_{av} [cd/m ²]	U0	UI	TI [%]
Calculated values:	2.83	0.48	0.87	6
Required values according to class ME4a:	≥ 0.75	≥ 0.40	≥ 0.60	≤ 15
Fulfilled/Not fulfilled:	<input checked="" type="checkbox"/>	<input checked="" type="checkbox"/>	<input checked="" type="checkbox"/>	<input checked="" type="checkbox"/>



Operator
Telephone
Fax
e-Mail

Street 1 / Valuation Field Roadway 2 / Observer 3 / Isolines (L)



Values in Candela/m², Scale 1 : 301

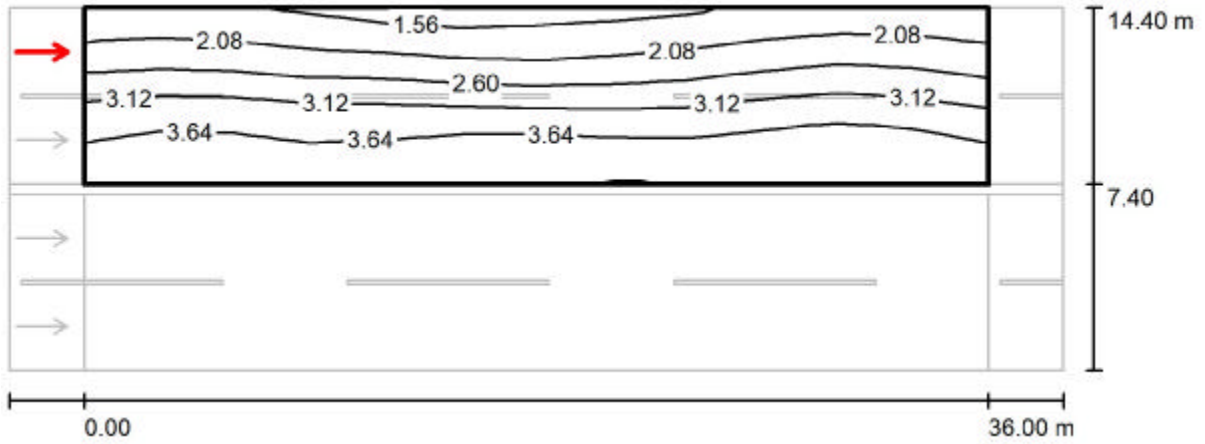
Grid: 12 x 6 Points
Observer Position: (-60.000 m, 9.150 m, 1.500 m)
tarmac: R3, q0: 0.070

	L_{av} [cd/m ²]	U0	UI	TI [%]
Calculated values:	2.75	0.48	0.92	6
Required values according to class ME4a:	≥ 0.75	≥ 0.40	≥ 0.60	≤ 15
Fulfilled/Not fulfilled:	<input checked="" type="checkbox"/>	<input checked="" type="checkbox"/>	<input checked="" type="checkbox"/>	<input checked="" type="checkbox"/>



Operator
Telephone
Fax
e-Mail

Street 1 / Valuation Field Roadway 2 / Observer 4 / Isolines (L)



Values in Candela/m², Scale 1 : 301

Grid: 12 x 6 Points

Observer Position: (-60.000 m, 12.650 m, 1.500 m)

tarmac: R3, q0: 0.070

	L_{av} [cd/m ²]	U0	UI	TI [%]
Calculated values:	2.93	0.50	0.78	5
Required values according to class ME4a:	≥ 0.75	≥ 0.40	≥ 0.60	≤ 15
Fulfilled/Not fulfilled:	<input checked="" type="checkbox"/>	<input checked="" type="checkbox"/>	<input checked="" type="checkbox"/>	<input checked="" type="checkbox"/>